



**2016 AOF Test Check Program
Monthly Report
Round 1
January 2016**

01/01/2016 – 01/02/2016

Result Receival Dates

Lab Code	Date
A	29/01/2016
B	
C	31/01/2016
D	31/01/2016
E	21/01/2016
F	08/01/2016
G	20/01/2016
H	07/01/2016
I	28/01/2016
J	
K	28/01/2016
L	01/01/2016
M	22/01/2016
N	31/01/2016
O	29/01/2016
Q	31/01/2016
R	31/01/2016
S	29/01/2016

Discussion of Results

Test Weight

Sample 1 – One outlier was identified for Lab **A** with a 2.92 kg/HL discrepancy from the upper quartile limit (65.83 kg/HL).

Sample 2 – No outliers were observed for this test.

Sample 3 – No outliers were observed for this test.



2016 AOF Test Check Program
Monthly Report
Round 1
January 2016
01/01/2016 – 01/02/2016

Impurities

Outliers were not observed for this test.

Oil Rapid

Sample 1 – No outliers were observed for this test.

Sample 2 – One outlier was identified for Lab **E** with a 0.64 of a percent discrepancy from the upper quartile limit (45.57%).

Sample 3 – Two Outliers were identified for Lab **E** and **K**. Lab **E** was 0.20 of a percent discrepancy from the upper quartile limit (46.70%). Lab **K** was 0.58 of a percent discrepancy from the lower quartile limit (44.78%).

All reported results for sample 3 Oil Rapid testing, were within the reference parameters found for the interquartile range. This will be discussed further in the next test set.

Oil Solvent Extraction

Sample 1 – Two Outliers were identified for Lab **D** and **S**. Lab **A** was 0.24 of a percent discrepancy from the upper quartile limit (38.36%). Lab **S** was 0.77 of a percent discrepancy from the lower quartile limit (36.88%).

Sample 2 – Two Outliers were identified for Lab **A** and **S**. Lab **A** was 1.63 of a percent discrepancy from the upper quartile limit (45.53%). Lab **S** was 0.46 of a percent discrepancy from the lower quartile limit (43.81%).

Sample 3 – No outliers were observed for this test.

The sample 3 IQR is greater by 2 to 3 times in comparison to samples 1 and 2. The normalized curve is platykurtic, not included in the reported data, with a standard deviation reported between values found between sample 1 and 2. This suggests that there are two distinct groups, precise within each niche set, of values reported for this sample.

Reproducibility limit of the extraction method ISO-659:2009 is R - 1.54 for oil content at ~43% in canola. Participation within the scope of the standard for this round has decreased to 50% of laboratories, and representation of the test method is limited due to the number of labs participating to standard capacity. As an observation - standard deviation on all testing was lower than stipulated reproducibility values.



2016 AOF Test Check Program
Monthly Report
Round 1
January 2016

01/01/2016 – 01/02/2016

Moisture Oven

Sample 1 – No outliers were observed for this test.

Sample 2 – Outliers were identified for Lab **D** and **K** which were a 0.02 and 0.11 of a percent discrepancy, respectively, from the lower quartile limit (5.56%).

Sample 3 – One outlier was identified for Lab **D** with a 0.15 of a percent discrepancy from the lower quartile limit (5.38%).

Moisture Rapid

Sample 1 – One outlier was identified for Lab **I** with a 0.15 of a percent discrepancy from the upper quartile limit (8.55%).

Sample 2 – No outliers were observed for this test.

Sample 3 – No outliers were observed for this test.

Oleic Oil

Sample 1 – No outliers were observed for this test.

Sample 2 – One outlier was identified for Lab **H** with a 0.39 of a percent discrepancy from the upper quartile limit (65.61%).

Sample 3 – One outlier was identified for Lab **H** with a 0.81 of a percent discrepancy from the upper quartile limit (67.54%).

Linoleic Oil

Sample 1 – Outliers were identified for Lab **H** and **M**. Lab **H** was 10.10 of a percent discrepancy from the upper quartile limit (16.75%). Lab **K** was 0.89 of a percent discrepancy from the lower quartile limit (18.73%).

Sample 2 – One outlier was identified for Lab **H** with a 11.93 of a percent discrepancy from the lower quartile limit (18.48%).

Sample 3 – One outlier was identified for Lab **H** with a 12.30 of a percent discrepancy from the upper quartile limit (19.70%).

Linolenic Oil

Outliers were not observed for this test.



**2016 AOF Test Check Program
Monthly Report
Round 1
January 2016**

01/01/2016 – 01/02/2016

Free Fatty Acid

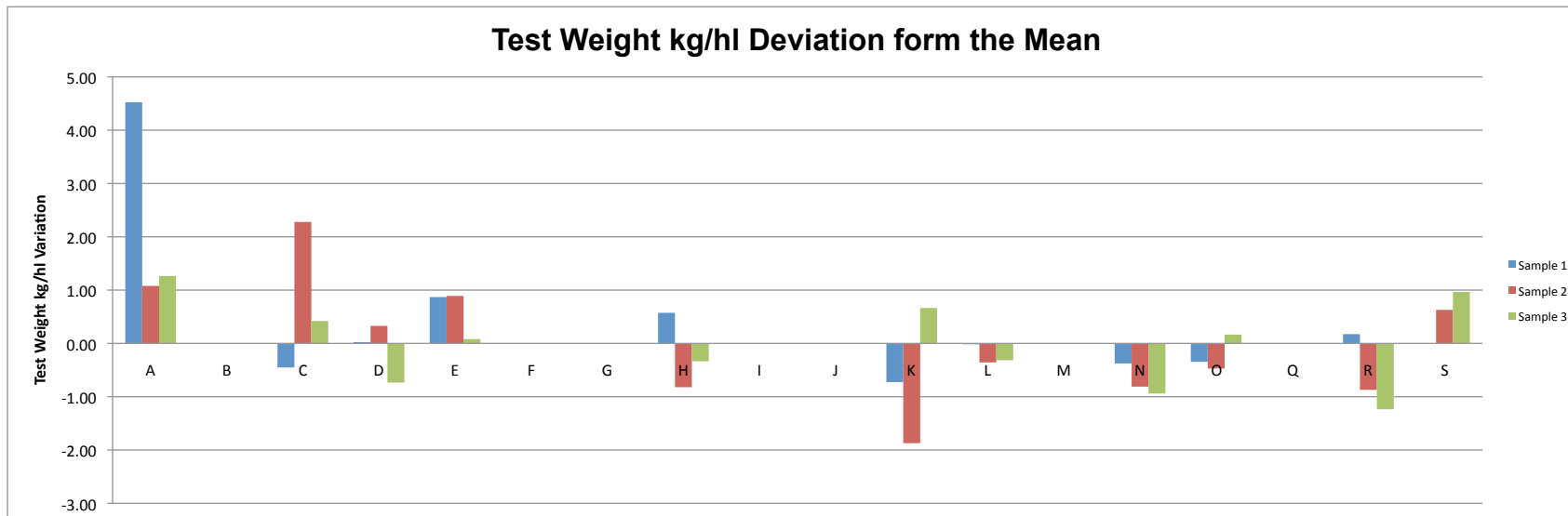
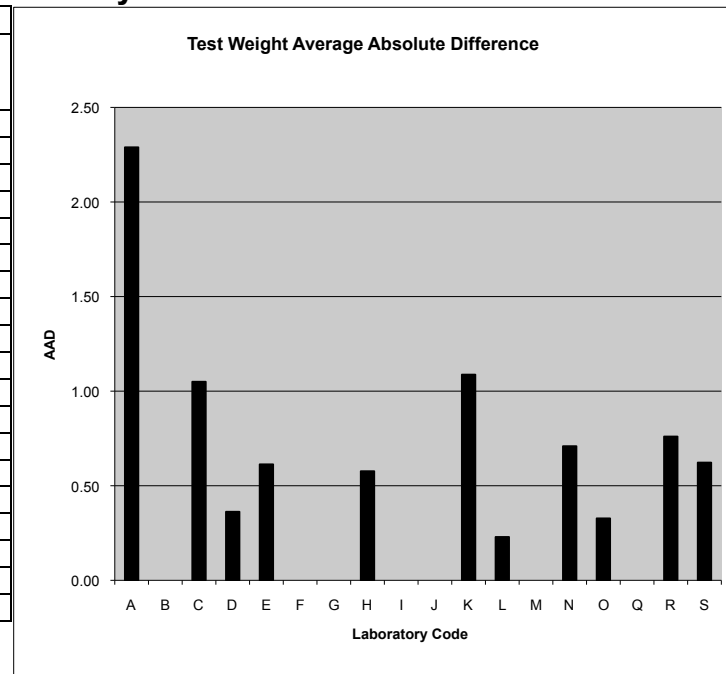
Sample 1 – One outlier was identified for Lab **K** with a 0.29 of a percent discrepancy from the upper quartile limit (0.82%).

Sample 2 – No outliers were observed for this test.

Sample 3 – One outlier was identified for Lab **K** with a 0.27 of a percent discrepancy from the upper quartile limit (0.76%).

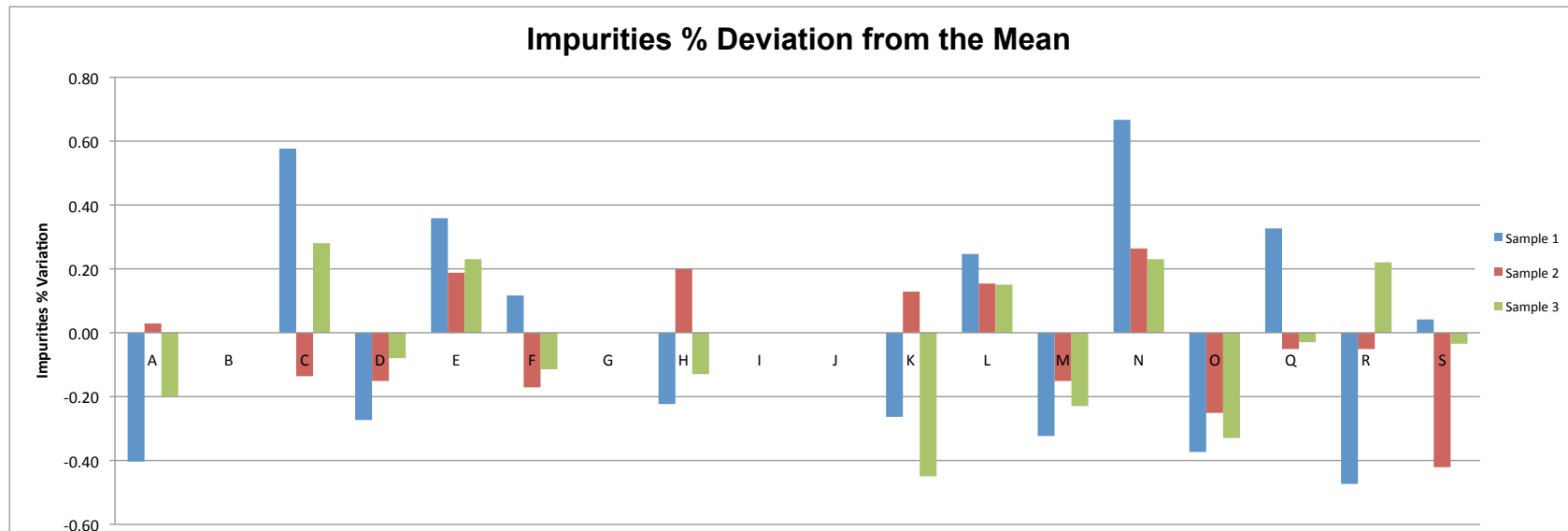
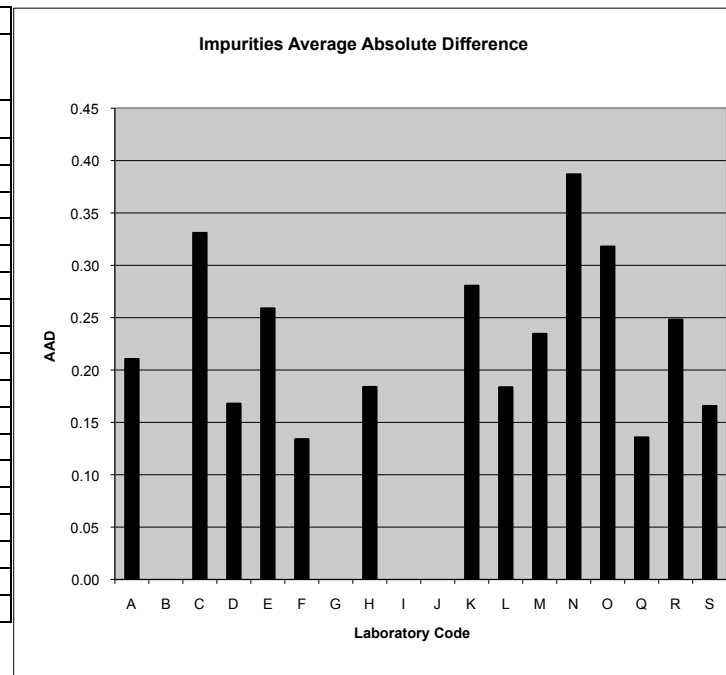
2016 AOF Test Check Program Round 1 Summary - January

Test Weight kg/hl								
Lab	Sample 1		Sample 2		Sample 3		Mean of Differences	Average Absolute Difference
	Result	S1-Mean	Result	S2-Mean	Result	S3-Mean		
A	68.75	4.52	68.00	1.08	67.50	1.27	2.29	2.29
B								
C	63.78	-0.45	69.20	2.28	66.66	0.42	0.75	1.05
D	64.25	0.02	67.25	0.33	65.50	-0.73	-0.13	0.36
E	65.10	0.87	67.81	0.89	66.32	0.08	0.61	0.61
F								
G								
H	64.80	0.57	66.10	-0.82	65.90	-0.33	-0.19	0.58
I								
J								
K	63.50	-0.73	65.05	-1.87	66.90	0.67	-0.64	1.09
L	64.21	-0.02	66.57	-0.36	65.92	-0.31	-0.23	0.23
M								
N	63.85	-0.38	66.11	-0.81	65.30	-0.94	-0.71	0.71
O	63.88	-0.35	66.45	-0.47	66.40	0.17	-0.22	0.33
Q								
R	64.40	0.17	66.05	-0.87	65.00	-1.24	-0.64	0.76
S	64.23	0.00	67.55	0.63	67.20	0.96	0.62	0.62
MEAN	64.23		66.92		66.24			0.78
STDEV	0.49		1.17		0.80			



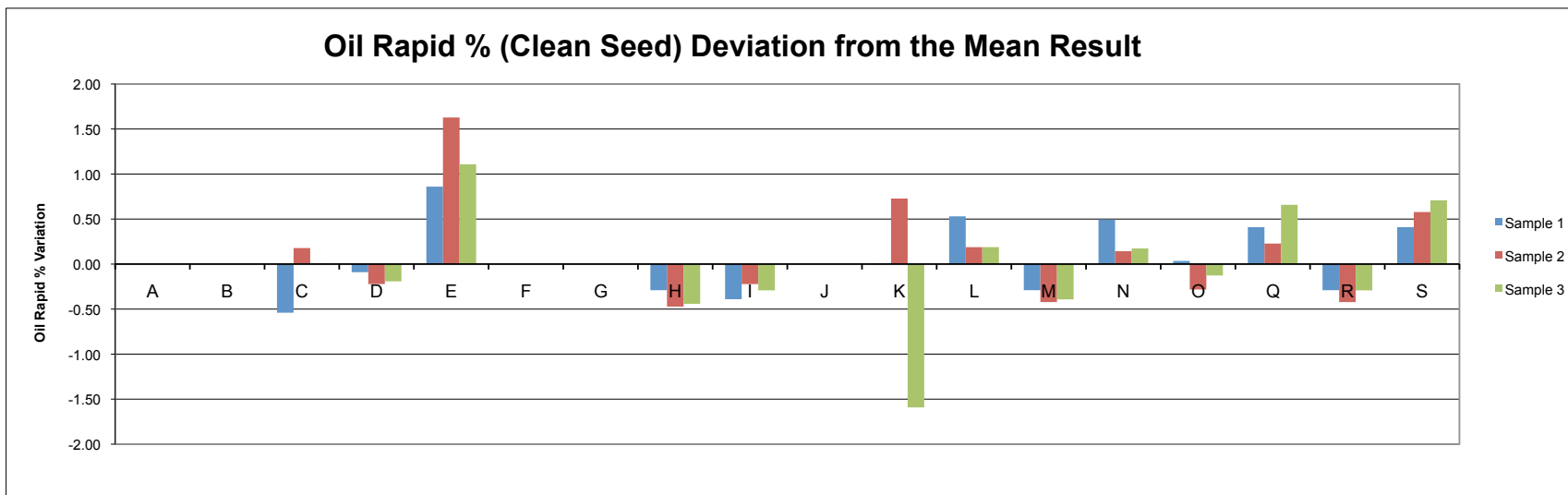
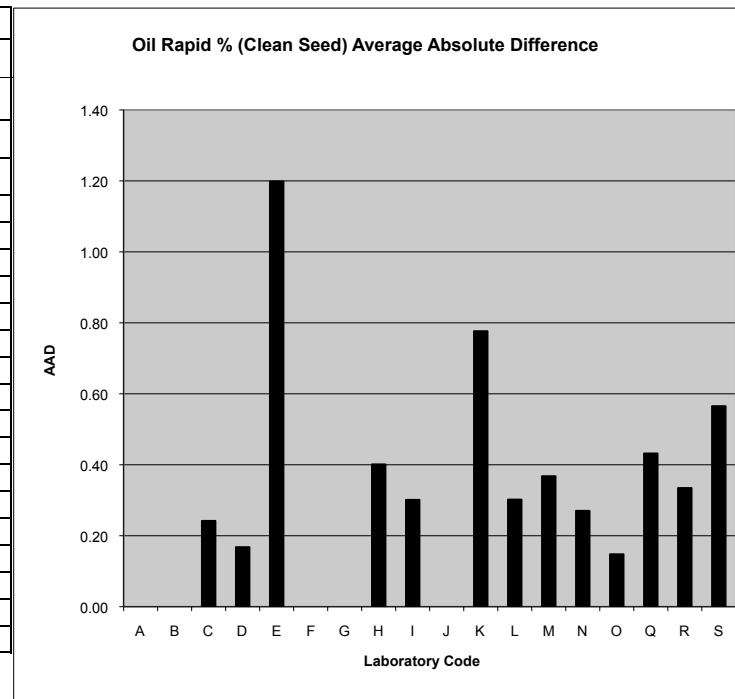
2016 AOF Test Check Program Round 1 Summary - January

Impurities %								
Lab	Sample 1		Sample 2		Sample 3		Mean of Differences	Average Absolute Difference
	Result	S1-Mean	Result	S2-Mean	Result	S3-Mean		
A	2.57	-0.40	0.98	0.03	1.03	-0.20	-0.19	0.21
B								
C	3.55	0.58	0.82	-0.14	1.51	0.28	0.24	0.33
D	2.70	-0.27	0.80	-0.15	1.15	-0.08	-0.17	0.17
E	3.33	0.36	1.14	0.19	1.46	0.23	0.26	0.26
F	3.09	0.12	0.78	-0.17	1.12	-0.11	-0.06	0.13
G								
H	2.75	-0.22	1.15	0.20	1.10	-0.13	-0.05	0.18
I								
J								
K	2.71	-0.26	1.08	0.13	0.78	-0.45	-0.19	0.28
L	3.22	0.25	1.11	0.15	1.38	0.15	0.18	0.18
M	2.65	-0.32	0.80	-0.15	1.00	-0.23	-0.23	0.23
N	3.64	0.67	1.22	0.26	1.46	0.23	0.39	0.39
O	2.60	-0.37	0.70	-0.25	0.90	-0.33	-0.32	0.32
Q	3.30	0.33	0.90	-0.05	1.20	-0.03	0.08	0.14
R	2.50	-0.47	0.90	-0.05	1.45	0.22	-0.10	0.25
S	3.02	0.04	0.53	-0.42	1.20	-0.03	-0.14	0.17
MEAN	2.97		0.95		1.23			0.23
STDEV	0.38		0.17		0.21			



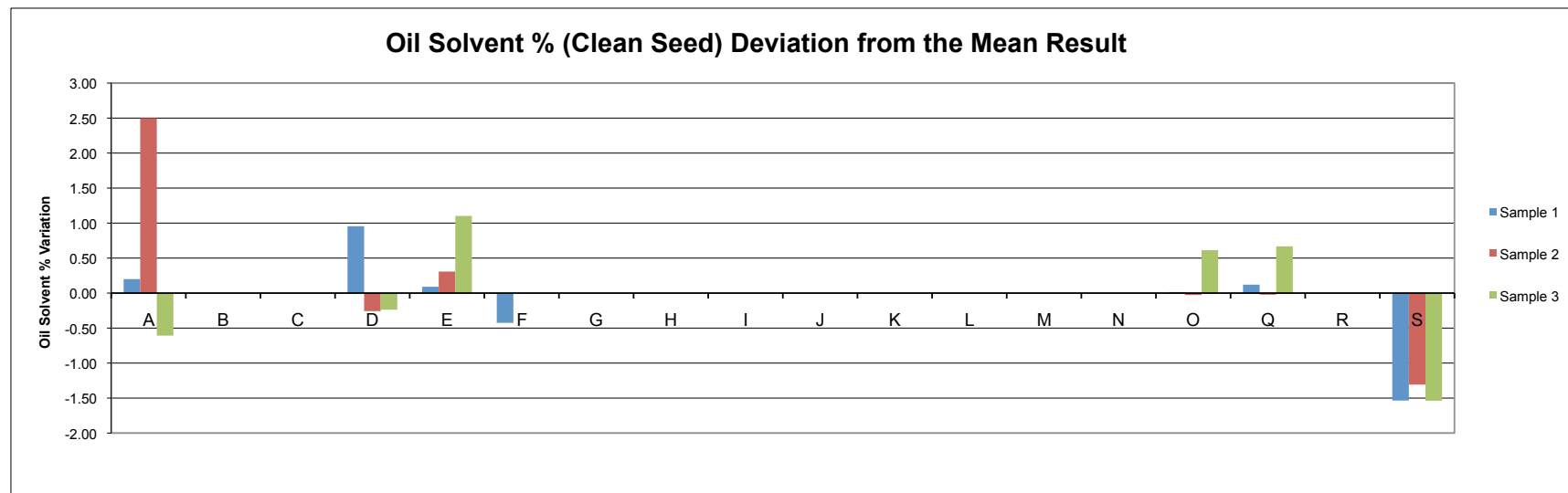
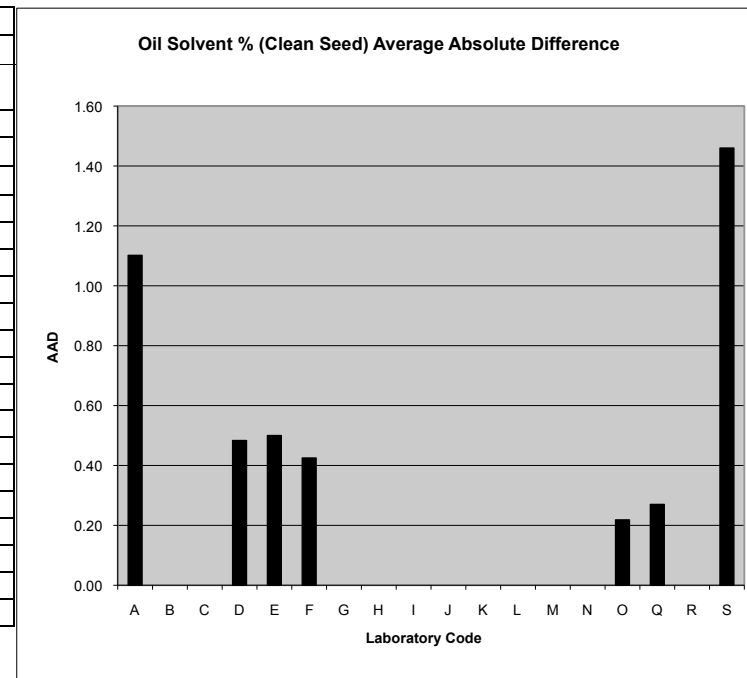
2016 AOF Test Check Program Round 1 Summary - January

Oil Rapid % (Clean Seed) Deviation from the Mean								
Lab	Sample 1		Sample 2		Sample 3		Mean of Differences	Average Absolute Difference
	Result	S1-Mean	Result	S2-Mean	Result	S3-Mean		
A								
B								
C	37.15	-0.54	44.75	0.18	45.80	0.01	-0.12	0.24
D	37.60	-0.09	44.35	-0.22	45.60	-0.19	-0.17	0.17
E	38.55	0.86	46.20	1.63	46.90	1.11	1.20	1.20
F								
G								
H	37.40	-0.29	44.10	-0.47	45.35	-0.44	-0.40	0.40
I	37.30	-0.39	44.35	-0.22	45.50	-0.29	-0.30	0.30
J								
K	37.70	0.01	45.30	0.73	44.20	-1.59	-0.28	0.78
L	38.22	0.53	44.76	0.19	45.98	0.19	0.30	0.30
M	37.40	-0.29	44.15	-0.42	45.40	-0.39	-0.37	0.37
N	38.19	0.50	44.72	0.14	45.97	0.17	0.27	0.27
O	37.73	0.03	44.29	-0.28	45.67	-0.13	-0.12	0.15
Q	38.10	0.41	44.80	0.23	46.45	0.66	0.43	0.43
R	37.40	-0.29	44.15	-0.42	45.50	-0.29	-0.33	0.33
S	38.10	0.41	45.15	0.58	46.50	0.71	0.57	0.57
MEAN	37.69		44.57		45.79			0.42
STDEV	0.38		0.40		0.40			



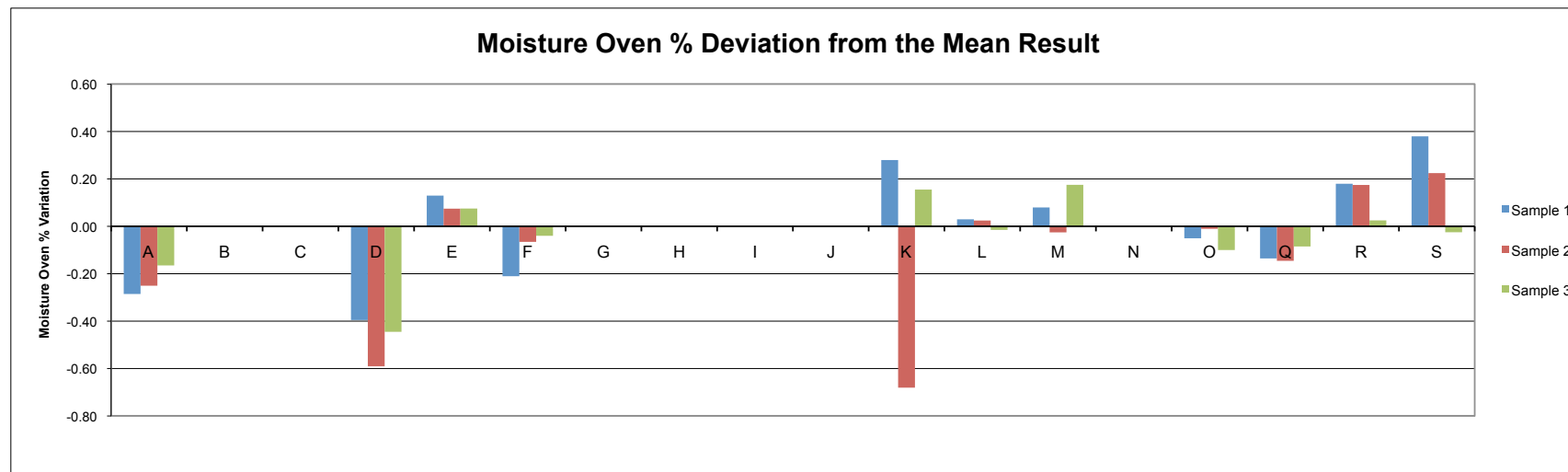
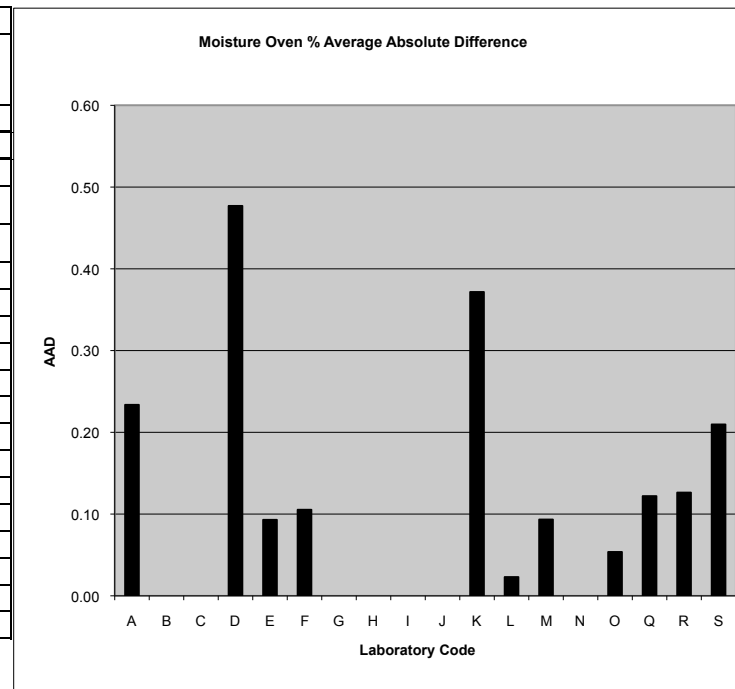
2016 AOF Test Check Program Round 1 Summary - January

Oil Solvent % (Clean Seed) Deviation from the Mean								
Lab	Sample 1		Sample 2		Sample 3		Mean of Differences	Average Absolute Difference
	Result	S1-Mean	Result	S2-Mean	Result	S3-Mean		
A	37.84	0.20	47.16	2.50	45.23	-0.61	0.70	1.10
B								
C								
D	38.59	0.96	44.40	-0.26	45.60	-0.24	0.15	0.48
E	37.73	0.09	44.97	0.31	46.94	1.10	0.50	0.50
F	37.21	-0.43					-0.43	0.43
G								
H								
I								
J								
K								
L								
M								
N								
O	37.65	0.02	44.63	-0.03	46.45	0.61	0.20	0.22
Q	37.76	0.12	44.64	-0.02	46.51	0.67	0.25	0.27
R								
S	36.10	-1.54	43.35	-1.31	44.30	-1.54	-1.46	1.46
MEAN	37.64		44.66		45.84			0.64
STDEV	0.25		0.23		0.98			



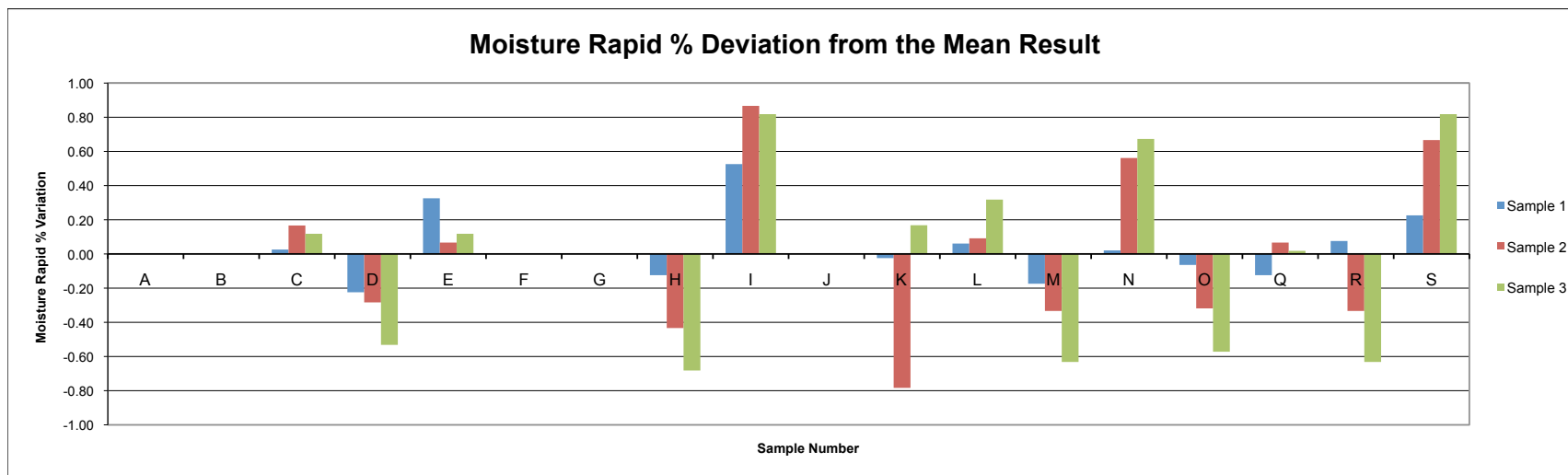
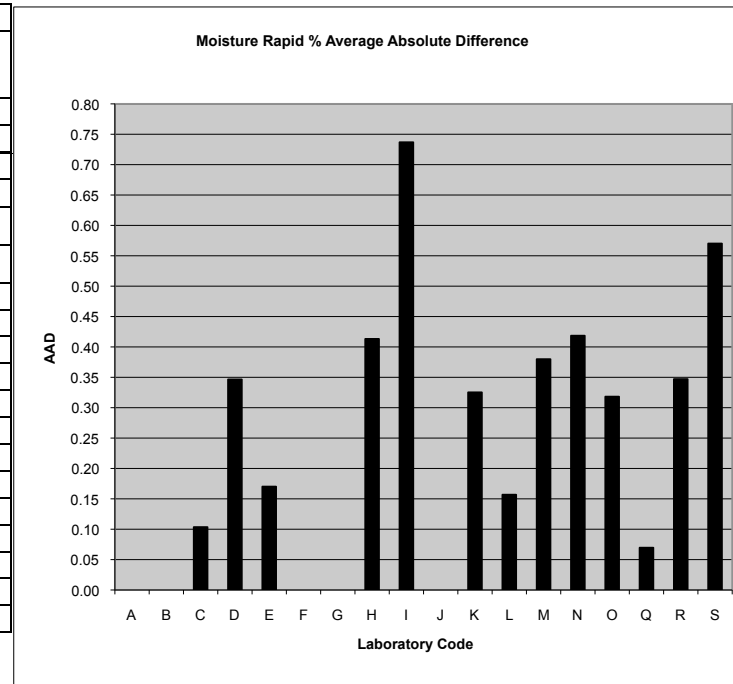
2016 AOF Test Check Program Round 1 Summary - January

Moisture Oven % Deviation from the Mean								
Lab	Sample 1		Sample 2		Sample 3		Mean of Differences	Average Absolute Difference
	Result	S1-Mean	Result	S2-Mean	Result	S3-Mean		
A	7.74	-0.29	5.88	-0.25	5.51	-0.17	-0.23	0.23
B								
C								
D	7.63	-0.40	5.54	-0.59	5.23	-0.45	-0.48	0.48
E	8.15	0.13	6.20	0.07	5.75	0.07	0.09	0.09
F	7.81	-0.21	6.06	-0.07	5.64	-0.04	-0.11	0.11
G								
H								
I								
J								
K	8.30	0.28	5.45	-0.68	5.83	0.15	-0.08	0.37
L	8.05	0.03	6.15	0.02	5.66	-0.02	0.01	0.02
M	8.10	0.08	6.10	-0.03	5.85	0.17	0.08	0.09
N								
O	7.97	-0.05	6.12	-0.01	5.58	-0.10	-0.05	0.05
Q	7.89	-0.14	5.98	-0.15	5.59	-0.09	-0.12	0.12
R	8.20	0.18	6.30	0.17	5.70	0.02	0.13	0.13
S	8.40	0.38	6.35	0.22	5.65	-0.03	0.19	0.21
MEAN	8.02		6.13		5.68			0.17
STDEV	0.24		0.15		0.11			



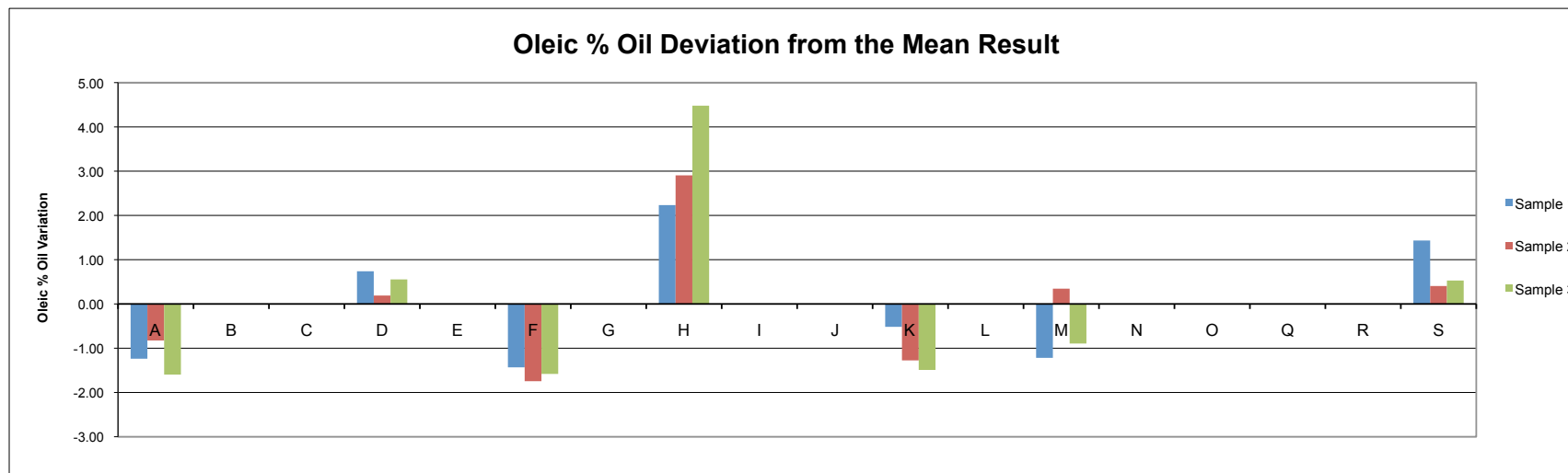
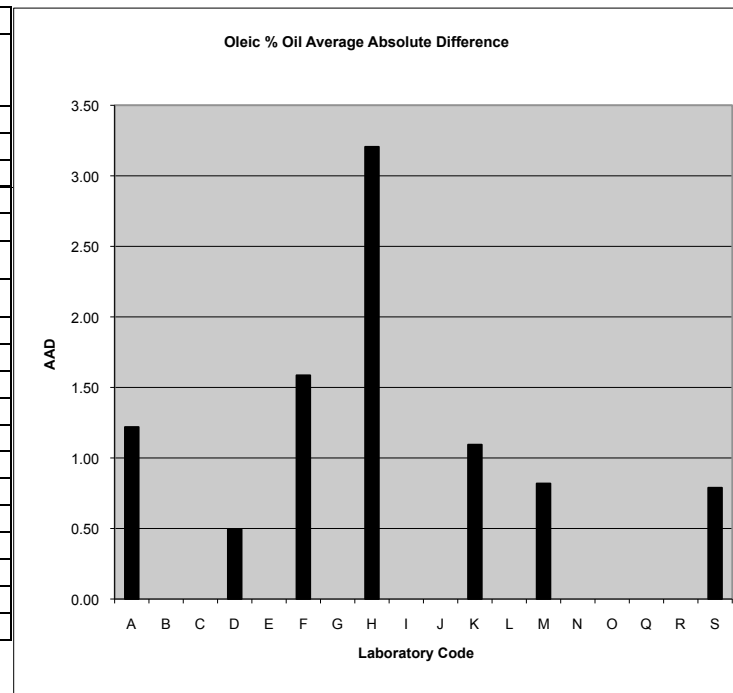
2016 AOF Test Check Program Round 1 Summary - January

Moisture Rapid % Deviation from the Mean								
Lab	Sample 1		Sample 2		Sample 3		Mean of Differences	Average Absolute Difference
	Result	S1-Mean	Result	S2-Mean	Result	S3-Mean		
A								
B								
C	8.20	0.03	6.15	0.17	5.70	0.12	0.10	0.10
D	7.95	-0.22	5.70	-0.28	5.05	-0.53	-0.35	0.35
E	8.50	0.33	6.05	0.07	5.70	0.12	0.17	0.17
F								
G								
H	8.05	-0.12	5.55	-0.43	4.90	-0.68	-0.41	0.41
I	8.70	0.53	6.85	0.87	6.40	0.82	0.74	0.74
J								
K	8.15	-0.02	5.20	-0.78	5.75	0.17	-0.21	0.33
L	8.24	0.06	6.08	0.09	5.90	0.32	0.16	0.16
M	8.00	-0.17	5.65	-0.33	4.95	-0.63	-0.38	0.38
N	8.20	0.02	6.55	0.56	6.26	0.67	0.42	0.42
O	8.11	-0.06	5.67	-0.32	5.01	-0.57	-0.32	0.32
Q	8.05	-0.12	6.05	0.07	5.60	0.02	-0.01	0.07
R	8.25	0.08	5.65	-0.33	4.95	-0.63	-0.30	0.35
S	8.40	0.23	6.65	0.67	6.40	0.82	0.57	0.57
MEAN	8.17		5.98		5.58			0.34
STDEV	0.16		0.48		0.56			



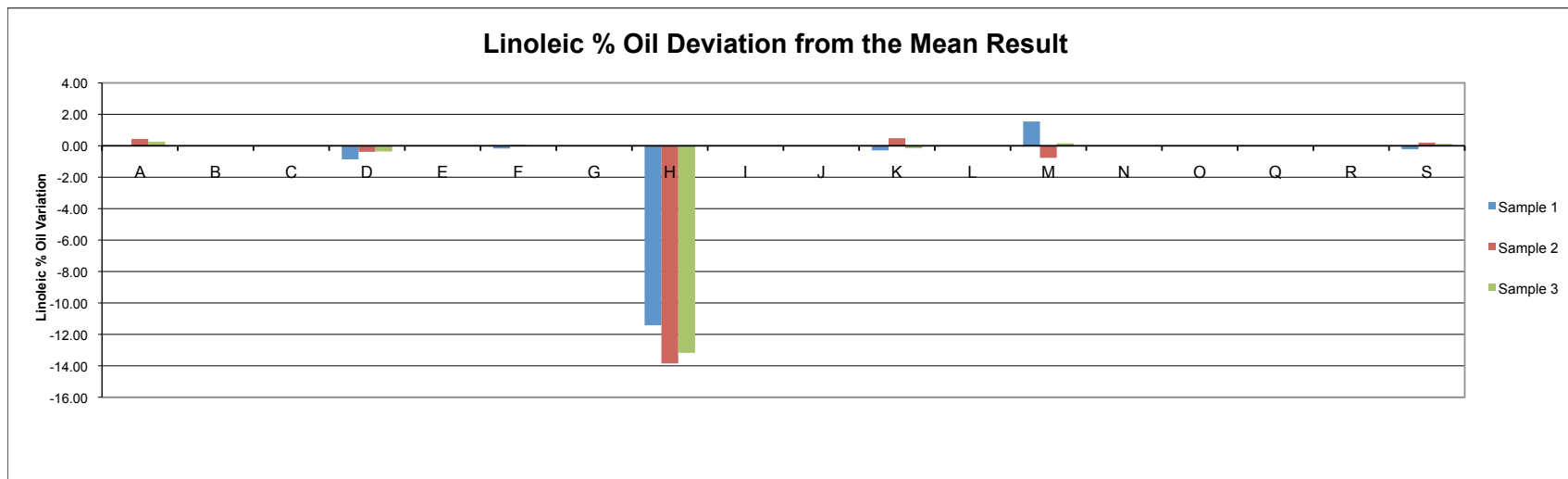
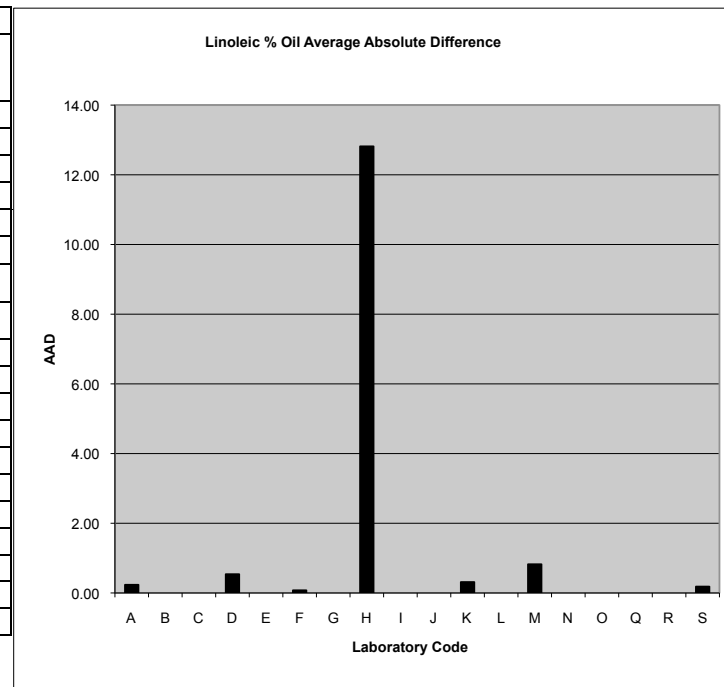
2016 AOF Test Check Program Round 1 Summary - January

Oleic % Oil Deviation from the Mean								
Lab	Sample 1		Sample 2		Sample 3		Mean of Differences	Average Absolute Difference
	Result	S1-Mean	Result	S2-Mean	Result	S3-Mean		
A	63.58	-1.24	62.27	-0.82	62.28	-1.60	-1.22	1.22
B								
C								
D	65.56	0.74	63.29	0.19	64.43	0.55	0.49	0.49
E								
F	63.39	-1.43	61.35	-1.75	62.29	-1.58	-1.59	1.59
G								
H	67.05	2.23	66.00	2.91	68.35	4.48	3.21	3.21
I								
J								
K	64.30	-0.52	61.82	-1.27	62.38	-1.49	-1.09	1.09
L								
M	63.60	-1.22	63.44	0.35	62.98	-0.89	-0.59	0.82
N								
O								
Q								
R								
S	66.25	1.43	63.50	0.41	64.40	0.53	0.79	0.79
MEAN	64.82		63.10		63.87			1.32
STDEV	1.47		1.53		2.27			



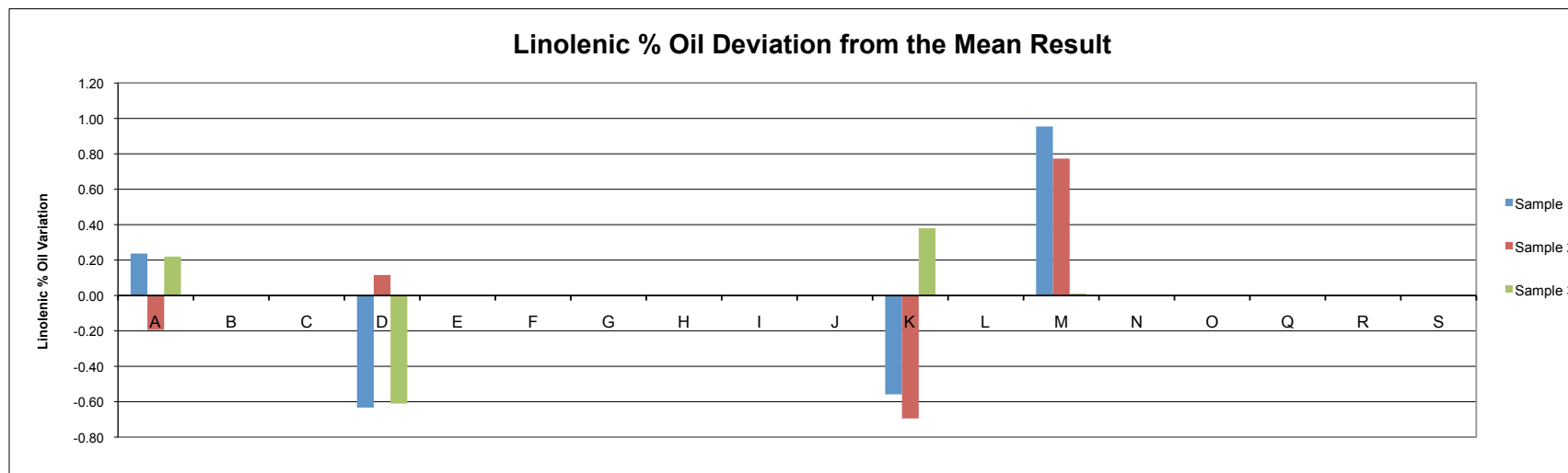
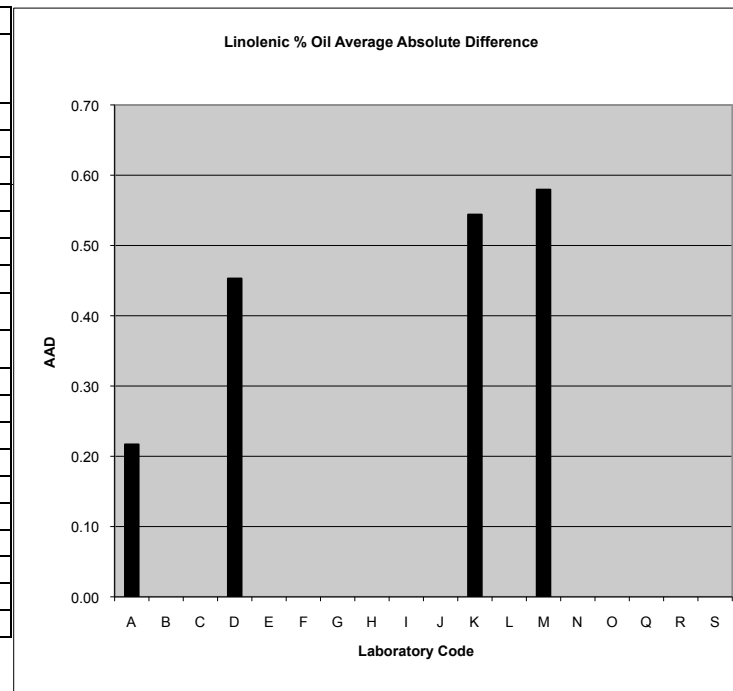
2016 AOF Test Check Program Round 1 Summary - January

Linoleic % Oil Deviation from the Mean								
Lab	Sample 1		Sample 2		Sample 3		Mean of Differences	Average Absolute Difference
	Result	S1-Mean	Result	S2-Mean	Result	S3-Mean		
A	18.08	0.01	20.84	0.43	20.84	0.26	0.23	0.23
B								
C								
D	17.21	-0.86	20.02	-0.39	20.21	-0.36	-0.54	0.54
E								
F	17.90	-0.17	20.44	0.04	20.56	-0.01	-0.05	0.08
G								
H	6.65	-11.42	6.55	-13.85	7.40	-13.17	-12.82	12.82
I								
J								
K	17.78	-0.29	20.88	0.48	20.41	-0.16	0.01	0.31
L								
M	19.62	1.54	19.63	-0.77	20.73	0.16	0.31	0.82
N								
O								
Q								
R								
S	17.85	-0.22	20.60	0.20	20.70	0.13	0.03	0.18
MEAN	18.07		20.40		20.57			2.14
STDEV	0.81		0.49		0.23			



2016 AOF Test Check Program Round 1 Summary - January

Linolenic % Oil Deviation from the Mean								
Lab	Sample 1		Sample 2		Sample 3		Mean of Differences	Average Absolute Difference
	Result	S1-Mean	Result	S2-Mean	Result	S3-Mean		
A	9.14	0.24	8.89	-0.19	8.89	0.22	0.09	0.22
B								
C								
D	8.27	-0.63	9.20	0.12	8.06	-0.61	-0.38	0.45
E								
F								
G								
H								
I								
J								
K	8.34	-0.56	8.39	-0.69	9.05	0.38	-0.29	0.54
L								
M	9.85	0.95	9.86	0.77	8.68	0.01	0.58	0.58
N								
O								
Q								
R								
S								
MEAN	8.90		9.08		8.67			0.45
STDEV	0.75		0.61		0.43			



Free Fatty Acid % Oil Deviation from the Mean				
Sample 1	Sample 2	Sample 3	Mean of	Absolute

Free Fatty Acid % oil Average Absolute Difference
