

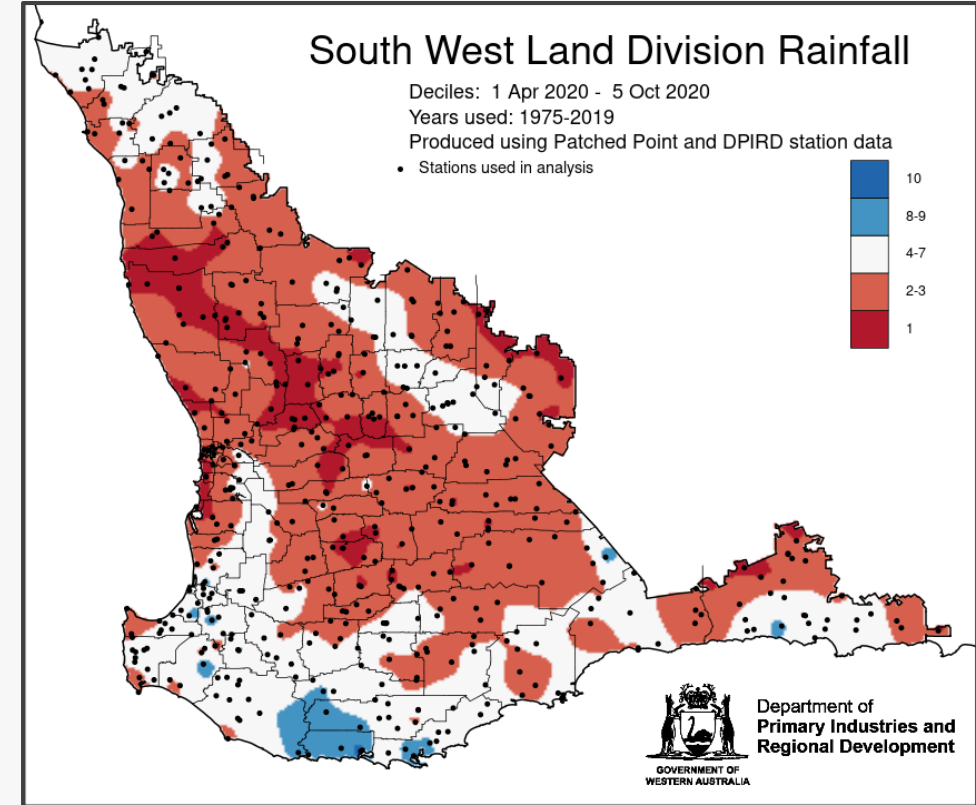
# W.A. 2020 Season Report



Andrew Wherrett, Living Farm

## Somewhat unusual season:

- Average or better summer rainfall (Jan only)
  - But very dry 2019.
- Later than “average” start – 23 May.
- Some earlier rain in pockets – south, western parts.
- Some (South Stirlings, Gardiner) had tough start, then 100+ mm in one go.
- Low decile season for most of W.A.
  - Reseeding common in central/north areas.
- Warm – unusual for a low rainfall year.
- “Soft” finish – cool during Sept/Oct, but no significant rainfall.





## Canola:

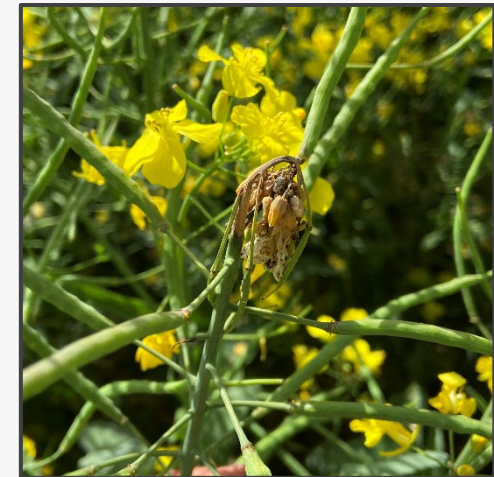
- WA in general – most farmers would have been happy to finish with something close to average.
- Yields were a surprise in many places.
- South and western areas different:
  - Earlier rain, early sowing, soft wet finish.
  - Big yield potential – realised.

## High Rainfall Growers:

- Chasing big yields (for W.A.) – 3.5+ t/ha.
- Big inputs – 150 kg-N/ha minimum.
- Large biomass crops.

## Blackleg

- Small delay in ascospore release – but not like 2019.
- Very high blackleg pressure during vegetative phase in high yield potential areas.
  - Questions on whether/when to spray – leap of faith.
- Lots of upper canopy blackleg.
  - Contribution to yield unknown. Most were spraying for Sclerotinia anyway.
  - What to do in “marginal” Sclerotinia areas??



## Sclerotinia

- In the usual places, where rainfall/biomass/humidity encouraged it!
- Recognition of more “susceptible” varieties – loosely based on morphology and development.
- Some basal infections.

## White Leaf Spot

- It came and it went.

## Powdery Mildew

- Late season infections along the south coast.
- During pod fill.
- No obvious influence on yield.

