



WHITE LEAF SPOT IN CANOLA

Trent Potter,
Yeruga Crop Research

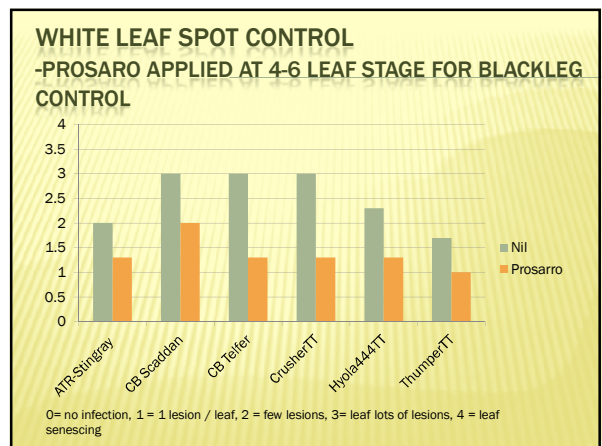
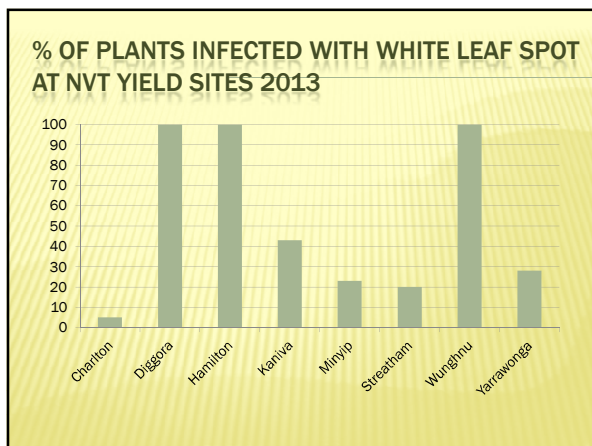
Steve Marcroft,
Marcroft Grains Pathology


2013 THE YEAR OF WHITE LEAF SPOT

MYCOSPHAERELLA CAPSELLAE

WHITE LEAF SPOT 2013 PROGRESSION



WHITE LEAF SPOT

Treatment	Blackleg (% int. infection)	WLS score	Grain yield (t/ha)
Untreated	7	4.5 a	3.68 b
Jockey stayer	10	2.5 bc	4.0 ab
Foliar 1	5	2.3 bc	3.71 b
Foliar 2	7	3.0 b	3.84 ab
Foliar 3	2	0.7 d	4.43 a
Jockey + Foliar 1	3	1.0 cd	4.22 ab
Jockey + Foliar 2	5	1.8 c	4.21 ab
Jockey + Foliar 3	6	0.5 d	4.34 a