

Canola Diseases: THE BACK POCKET GUIDE



Grains
Research &
Development
Corporation



POCKET
GUIDE



Disease in back pocket guide

- Damping off
- Downy mildew
- Powdery mildew
- Viruses
- Stem nematode
- White leaf spot
- Phytothora root rot
- Alternaria
- White rust
- Blackleg
- Sclerotinia

Suggestions

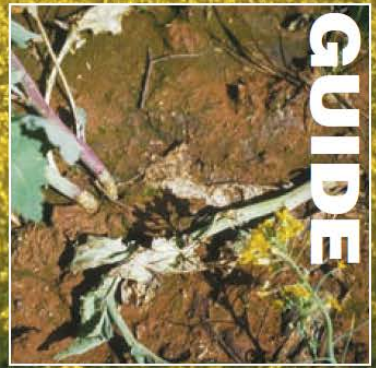
- Delete
 - Stem nematode
 - Phytothora root rot
 - White rust??
- Add
 - Clubroot
 - Blackleg root rot

Managing Blackleg and Sclerotinia in Canola: THE BACK

POCKET GUIDE



Grains
Research &
Development
Corporation



Issues – these backpocket guides are likely to last for 10 years plus.

- Sclerotinia

- Do we mention genetic control?? Or is it still more than 10 years away??
- Are recommendations likely to change significantly with the registration of Prosaro??

- Blackleg

- Can we mention the concept of R groups?? And say check blackleg ratings for R Group detail.