



Aviator Xpro What is Aviator Xpro

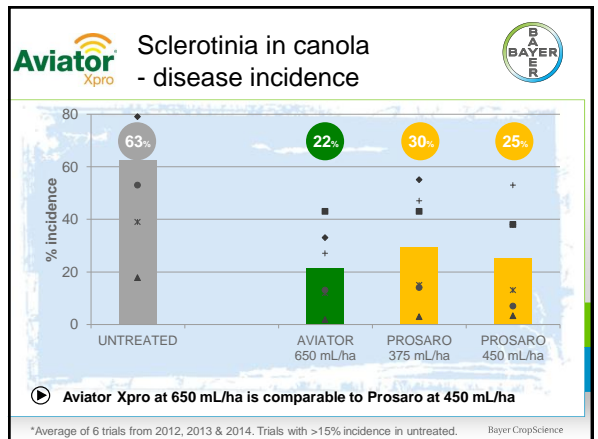
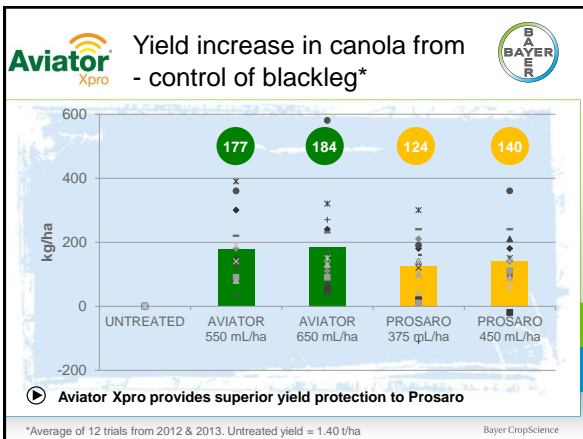
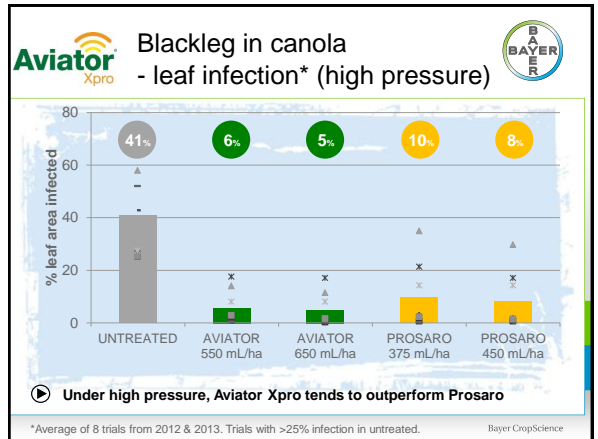
Aviator Xpro 225 EC (75 g/L bixafen + 150 g/L prothioconazole)

- Contains **bixafen**, a Group 7 (SDHI) fungicide
- Proven performance of **prothioconazole** (Group 3 - triazolothione)
- Submitted for registration in canola (blackleg only)
- Submissions pending for canola (sclerotinia)

Aviator Xpro Disease claims - canola

CROP	RATE	DISEASE
Canola	550 to 650 mL/ha	Blackleg # (<i>Leptosphaeria maculans</i>)
	550 to 800 mL/ha	Sclerotinia stem rot * (<i>Sclerotinia sclerotiorum</i>)

* An application has been submitted to the APVMA for control of blackleg in canola.
* Rates & diseases based on large area permit application. APVMA approved label claims may vary.



Aviator Xpro Aviator Xpro in canola





Prosaro 420SC
10 min after application

Aviator Xpro
5 minutes after application

Bayer CropScience

Aviator Xpro Summary - canola



Disease control in canola

- Aviator Xpro provides a new mode of action for disease control in canola
- Under high blackleg pressure, Aviator Xpro tends to outperform Prosaro
- Aviator Xpro provides comparable control of sclerotinia to Prosaro

Registration in canola



- Large area trials will be conducted under permit this season
- Registration dates:
 - Blackleg – April 2016
 - Sclerotinia – September 2016

Please contact geoff.robertson@bayer.com if you are interested in obtaining a sample for testing.

Bayer CropScience

PROSARO

Home Run the Scale About The Scale Prosaro 420 SC Contact






The Prosaro Scale

Start

The Prosaro Scale is your early warning system which shall help you understand how to firstly identify and then minimise the risk of blackleg spore showers, before blackleg becomes a major problem in your Canola crop. The basis of the Prosaro Scale builds on the well-established Blackleg Sporecast model, which was obtained in collaboration with DAFWA. The Prosaro Scale uses daily temperature and rainfall inputs, sourced from BOM and Weatherzone in order to provide a seasonal estimate on the arrival of the first spore showers.

Bayer CropScience

Science For A Better Life

Thank you

Bayer CropScience