

NSW CANOLA PATHOLOGY UPDATE

DR KURT LINDBECK – NSW DPI WAGGA WAGGA

Grains Agronomy and Pathology Partnership
An Alliance between NSW DPI and GRDC



Department of
Primary Industries

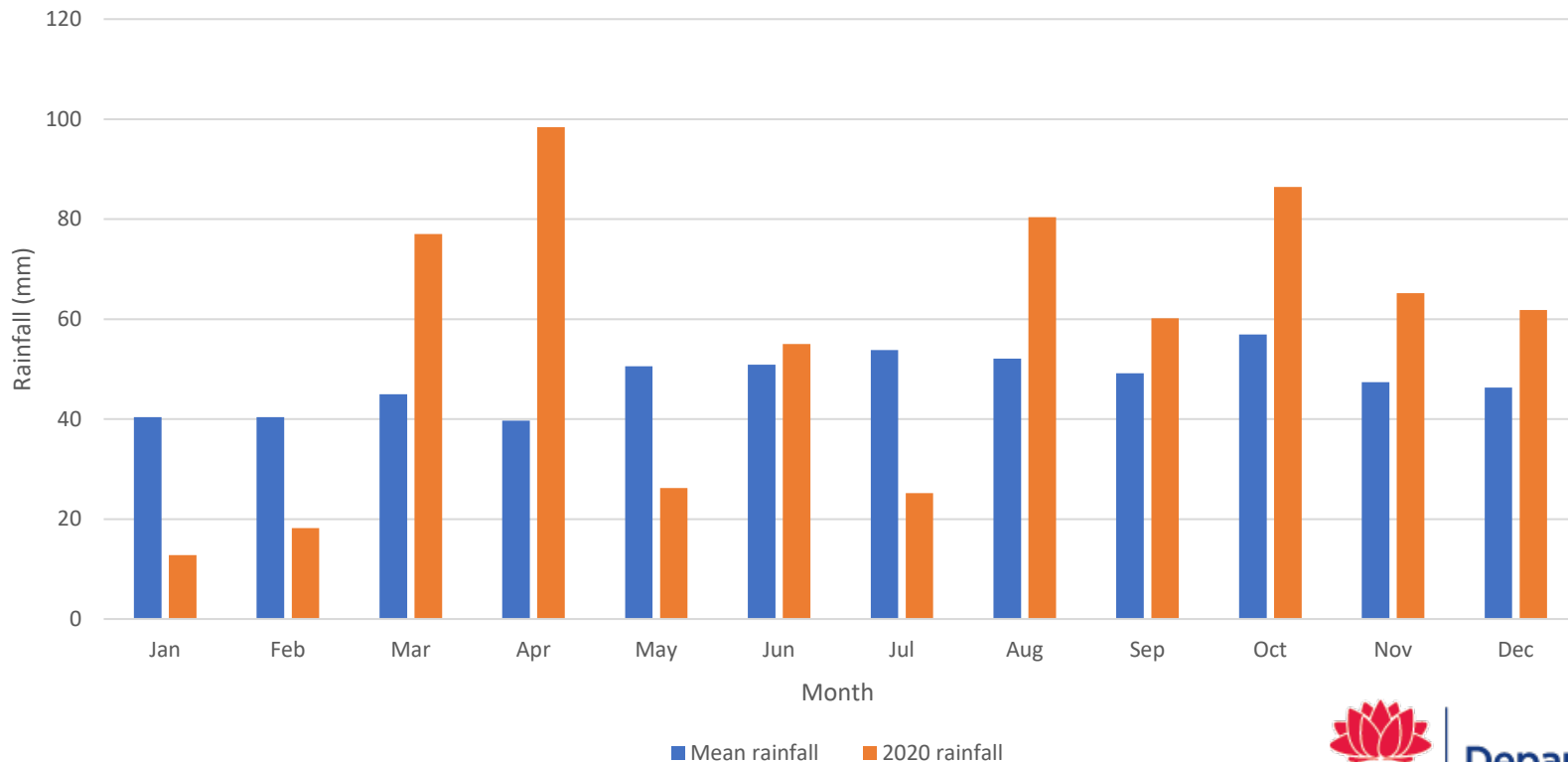


GRDC
GRAINS RESEARCH
& DEVELOPMENT
CORPORATION

INTRODUCTION

- Seasonal conditions in 2020 considered ideal for many years (mild temps & rainfall)
- Good autumn rains – crops sown on time
- Adequate early winter rains ➡ Above average spring rainfall
- Rapid crop development in many districts
- Excellent yields across southern and central NSW ➡ cool, mild finish (3t/ha +)
- Also ideal for development of pathogens, low inoculum levels ➡ epidemics quickly
 - Blackleg (widespread)
 - Sclerotinia (med/high rainfall districts)
 - Alternaria (sporadic)
 - Powdery mildew (sporadic)

WAGGA WAGGA RAINFALL 2020



ON FARM

POLYTEX
TARPAULINS

- Grain Bunker Covers
- Hay & Cotton Covers
- Shelter Covers

www.polytex.net.au
Ph 1300 059 003
info@polytex.net.au



THUMPER: John Kirkegaard, CSIRO; James Cheetham, Delta Ag; and, Mayfield farm manager, Peter Brooks, in the record canola crop.

Oberon's 7.16t/ha crop

BY GREGOR HEARD

Under conditions without The record was made even CSIRO farming systems program, consulted with Peter



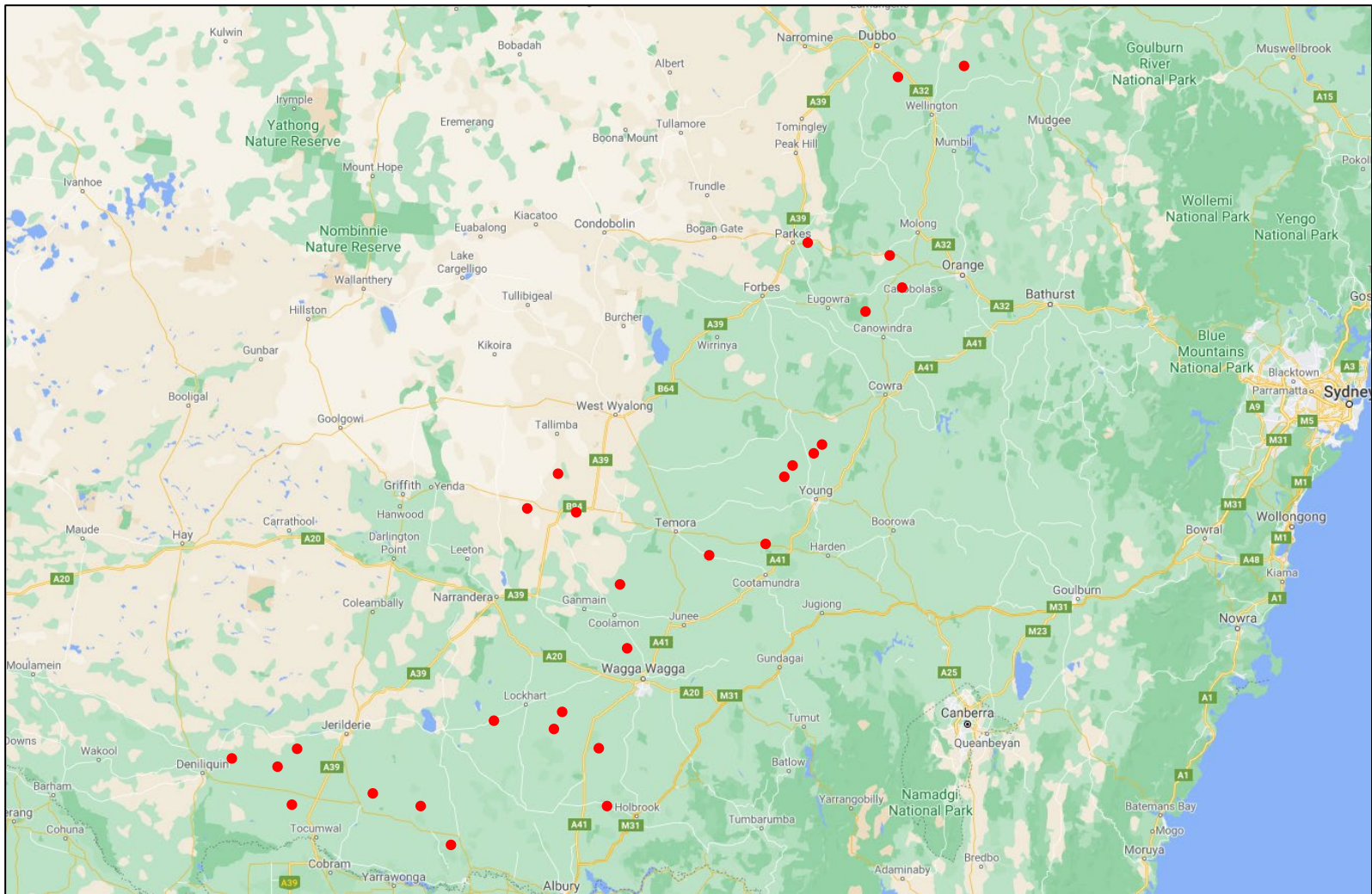
Leabrook barley has won Barley Australia malt accreditation.

Barley varieties win malt approval

AUSTRALIAN farmers will have access to three more malt barley varieties this season with Barley Australia announcing accreditation for the Maximus, Alestar and Leabrook lines.
Maximus CL, Alestar and Leabrook lines will be available from



Department of Primary Industries





BLACKLEG

- Favourable conditions for the disease to develop later in season
- Dryish conditions early – mid winter → reduced internal infection
- Multiple infection events throughout late winter and spring
- 100% of canola crops surveyed
- Symptoms ranged from leaf lesions, stem cankers and UCI

- *Implications for 2021*
 - Large areas of canola stubble releasing spores in 2021
 - Widespread use of foliar fungicides

2020 MONITORING SITE RECOMMENDATIONS

Site	Resistance Group						
	A	B	C	BF	AD	ABDF	H
Beckom	Red	Red	Red	Red	Green	Green	
Condobolin	Yellow	Yellow	Red	Red	Green	Green	
Cootamundra	Yellow	Yellow	Red	Yellow	Yellow	Green	Green
Cudal	Yellow	Yellow	Red	Red	Green	Green	
Gerogery	Red	Yellow	Red	Red	Green	Green	
Grenfell	Red	Yellow	Red	Green	Green	Green	
Lockhart	Red	Red	Red	Red	Yellow	Green	Green
Parkes	Red	Red	Red	Red	Green	Green	
Wagga Wagga	Red	Red	Red	Yellow	Green	Green	Green
Wellington	Yellow	Red	Red	Yellow	Green	Green	

2019

Site	Resistance Group								
	A	B	C	ABD	ABDF	BF	BC	H	
Beckom	Insufficient data due to drought								
Condobolin	Insufficient data due to drought								
Cootamundra	Red	Red	Red	Green	Green	Yellow	Yellow	Green	
Cudal	Red	Red	Red	Green	Green	Red	Yellow	Green	
Gerogery	Red	Red	Red	Green	Green	Red	Yellow		
Grenfell	Insufficient data due to drought								
Lockhart	Insufficient data due to drought								
Parkes	Insufficient data due to drought								
Wagga Wagga	Red	Red	Red	Green	Green	Red	Yellow	Green	
Wellington	Insufficient data due to drought								

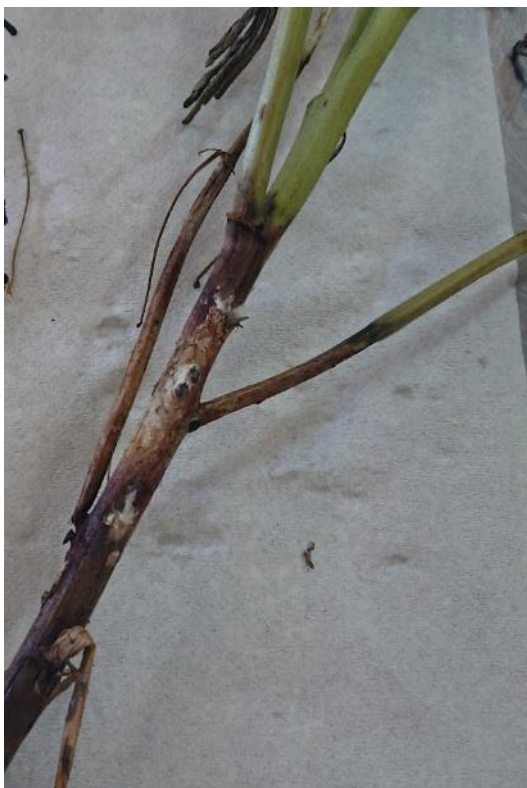


SCLEROTINIA

- Seasonal conditions favourable for development of disease
- Few reports of serious yield losses
- Prolific use of foliar fungicides, many crops sprayed for the first time
- Early maturing varieties at most disease risk

	NL Lupin	Albus Lupin	Chickpea	Field pea	Faba bean	Lentil
% of crops infected	81%	60%	50%	43%	71%	25%
% incidence within crop	8 – 66%	3 – 62%	1 – 2%	2 – 48%	1 – 20%	24%

- *Implications for 2021*
 - Sclerotia produced in 2020 will pose a significant disease threat in 2021 and beyond
 - Producers following 'double break' cropping system are at highest risk – Pulse/canola rotation





ALTERNARIA POD SPOT

Not seen at epidemic levels since 2010

- *Alternaria brassicae*, *Alternaria brassicicola*
- Sporadic disease in Australia
- Leaf spots during growing season
- Pod infection in seasons with late rainfall during pod fill and crop maturity
- Premature shattering
- Seed infection and seedling blight
- *Implications for 2021*
 - Check seed quality (germination and vigour)
 - Separation from old canola stubble

