


How agronomists and growers are managing canola and blackleg disease

Angela Van de Wouw

Steve Marcroft, Nick Perndt, Susie Sprague, Alex Idnurm, Kurt Lindbeck
Andrew Ware, Andrea Hills, Ciara Beard, Ravjit Khangura, Don McCaffery



1

Section 1. Demographic of survey respondents: who and where

Category	#	%
Advisor/Agronomist	74	64%
Farmer	38	33%
Researcher	4	3%
Total	116	

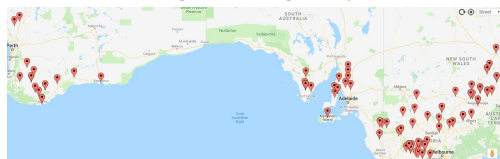
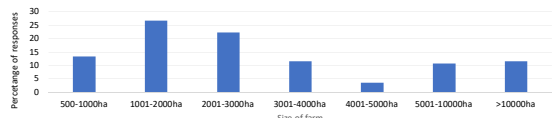
Removed researchers from remainder of analysis

State	Number of respondents (%)	Growing season rainfall (#, %)		
		Low	Med	High
Vic	38 (34%)	5 (4%)	19 (17%)	14 (13%)
NSW	32 (29%)	4 (4%)	24 (21%)	4 (4%)
SA	25 (22%)	1 (1%)	21 (18%)	3 (2%)
WA	17 (15%)	0 (0%)	4 (3%)	13 (12%)
Total	112	10 (9%)	68 (61%)	34 (30%)

Rainfall regions determined by experts from each state

2

Respondents from all major canola growing regions representing a range of farming enterprises

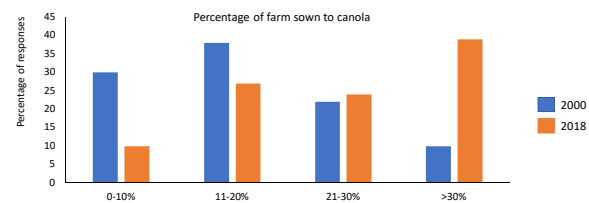



Size of farm	Percentage of responses
500-1000ha	15%
1001-2000ha	25%
2001-3000ha	20%
3001-4000ha	15%
4001-5000ha	5%
5001-10000ha	15%
>10000ha	15%

3

Section 2. Summary of cropping systems

- For the remaining survey questions, respondents compared practices in 2018 to those in 2000.
- Not all respondents could answer for both years
- Data presented as a percentage of respondents

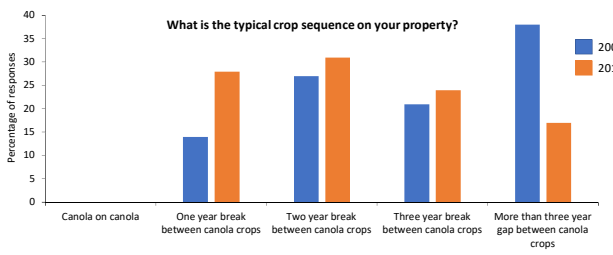


Percentage of responses	2000	2018
0-10%	30%	10%
11-20%	38%	25%
21-30%	22%	25%
>30%	10%	38%

4

- Average target yield (t/ha)
 - 2000 = 1.89 (range 1.0 – 3.0)
 - 2018 = 2.39 (range 0.8 – 4.0)

What is the typical crop sequence on your property?

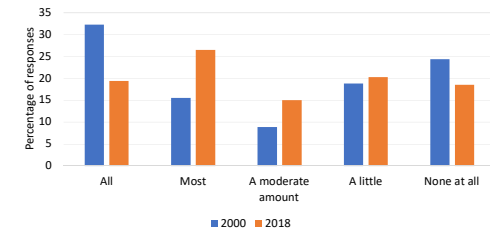


Crop Sequence	2000	2018
Canola on canola	0%	0%
One year break between canola crops	15%	28%
Two year break between canola crops	25%	30%
Three year break between canola crops	20%	25%
More than three year gap between canola crops	38%	18%

5

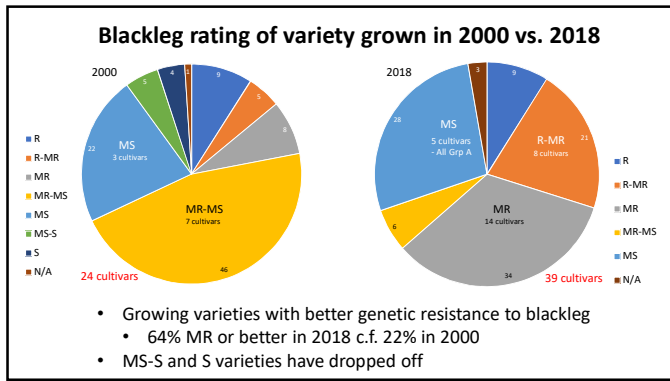
Section 3. Variety selection

To what extent do you retain seed of open pollinated varieties?

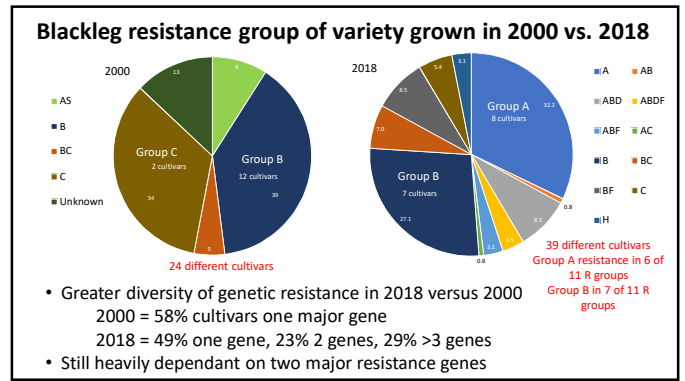


Extent	2000	2018
All	32%	18%
Most	15%	28%
A moderate amount	10%	15%
A little	18%	20%
None at all	25%	18%

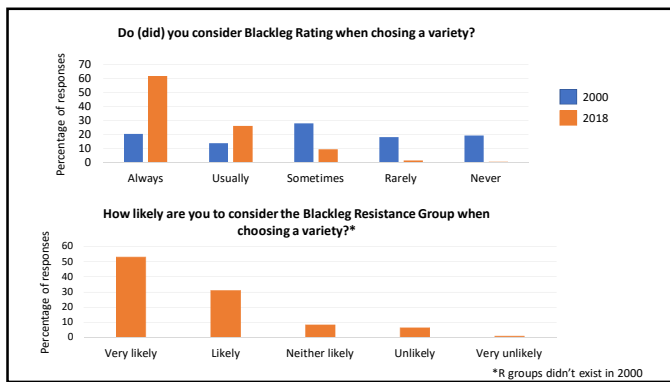
6



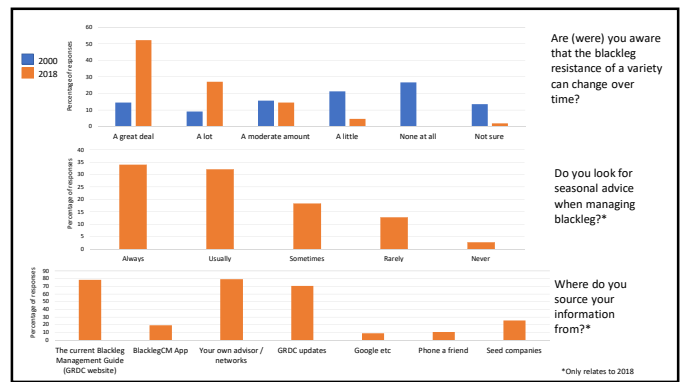
7



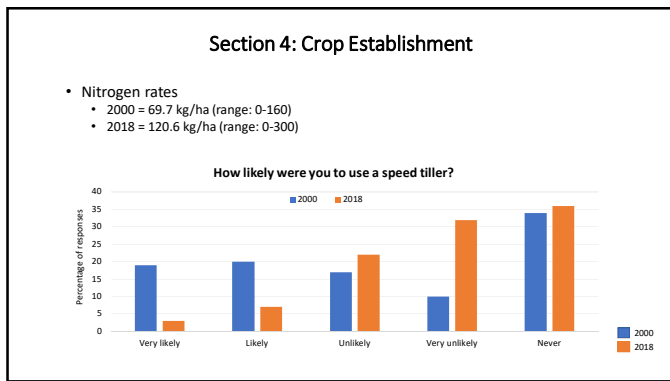
8



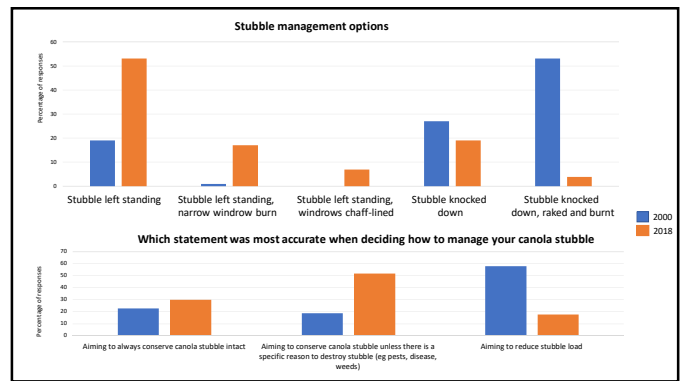
9



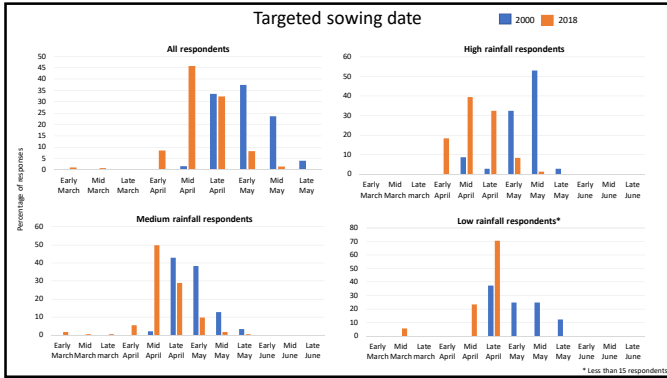
10



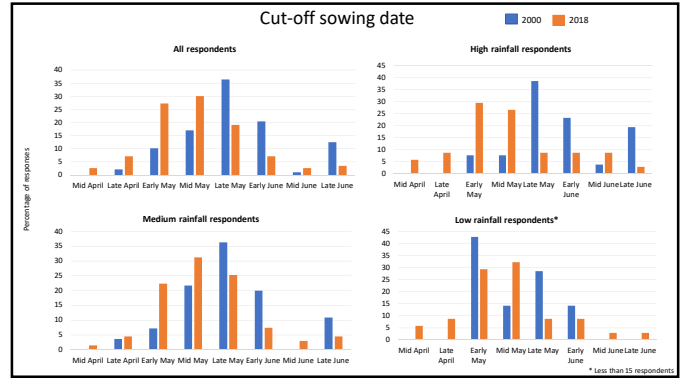
11



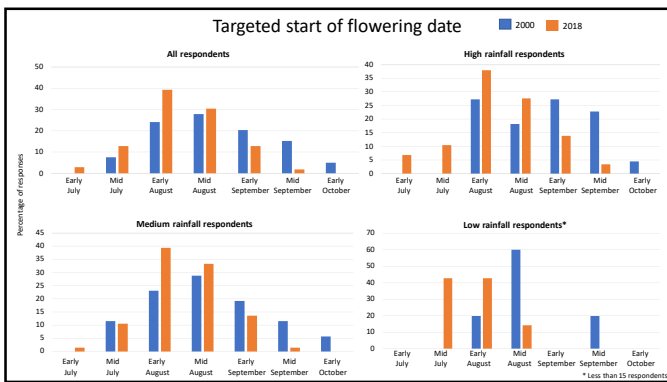
12



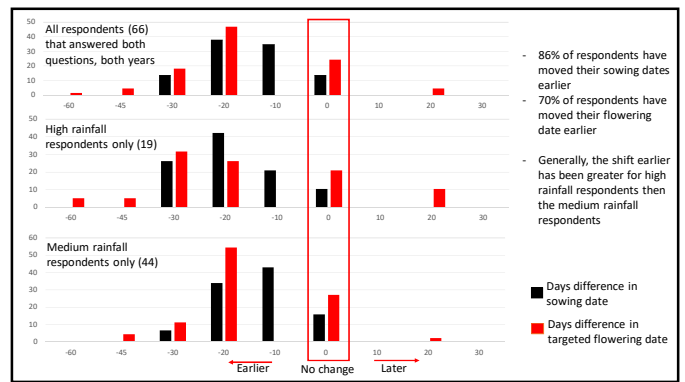
13



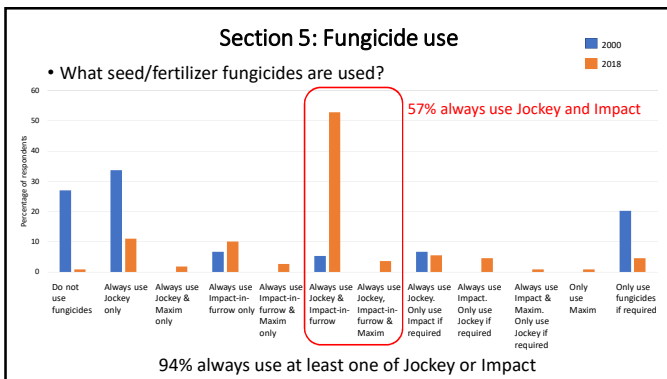
14



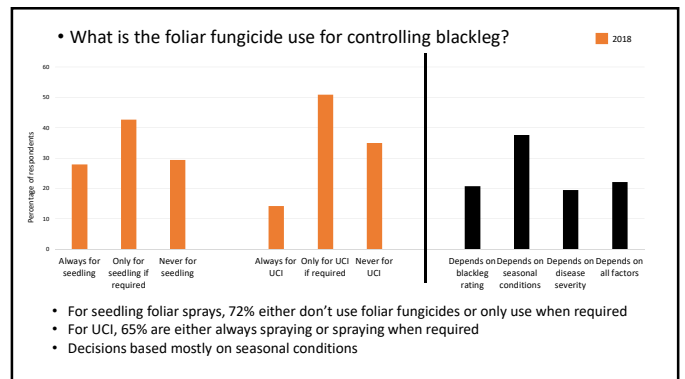
15



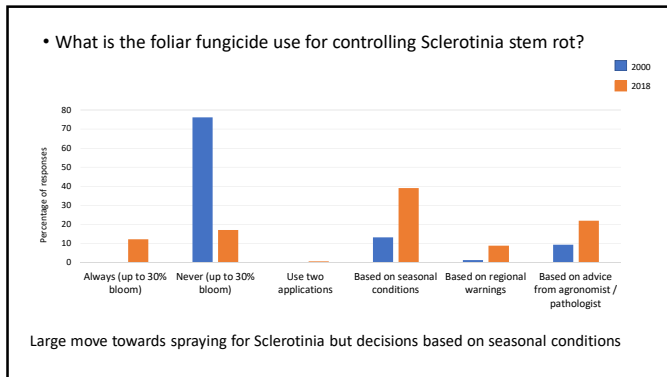
16



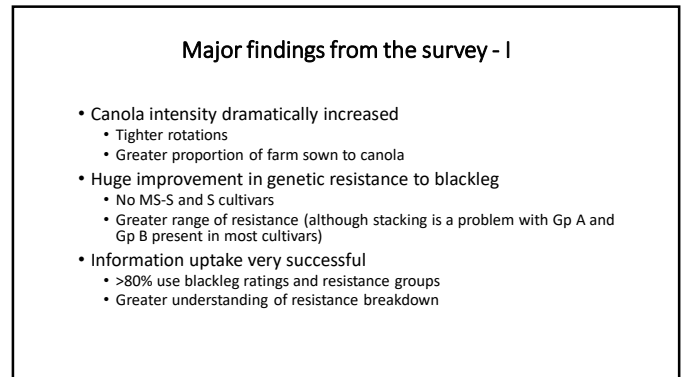
17



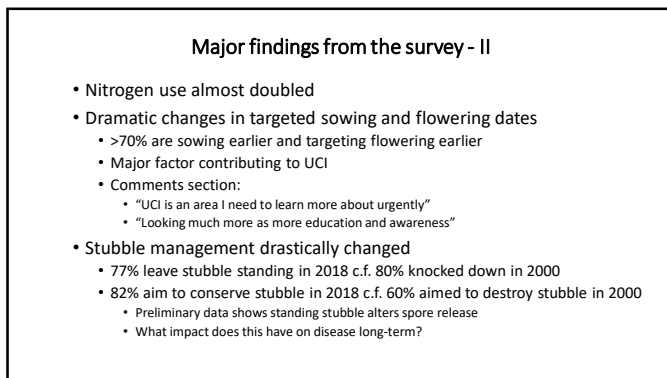
18



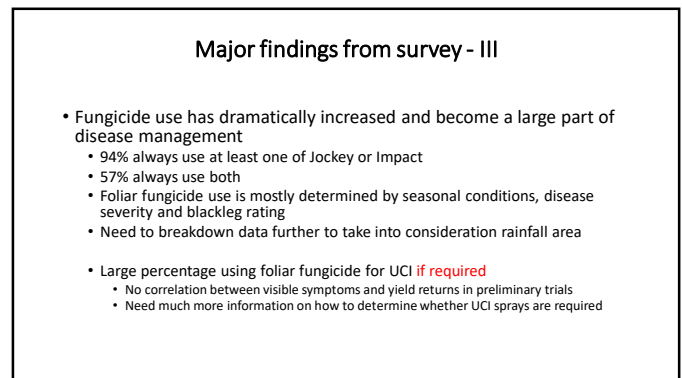
19



20



21



22