

Industry recommendations for group ABDF cultivars

Steve Marcroft

Angela Van de Wouw, Susie Sprague, Kurt Lindbeck, Andrew Ware, Ravjit Khangura, Andrea Hills, Ciara Beard, Audrey Leo and Alex Idnurm



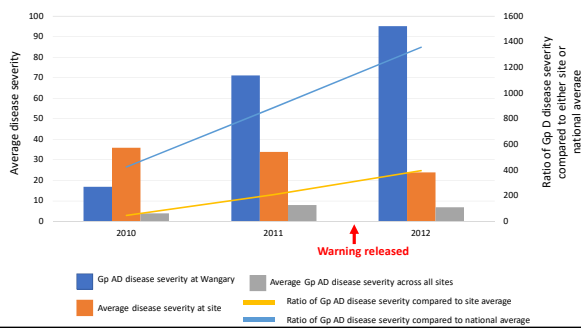
1

Warning released regarding breakdown of Group AD resistance prior to 2012 season

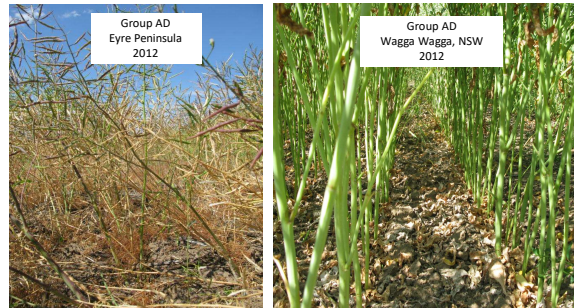
- Hyola50 (Group AD resistance) released commercially in 2007
- Leaf lesions monitored each year until 2009
 - No lesions seen
 - No internal infection (disease severity) data collected
- 2010 blackleg monitoring sites established with different resistance groups
 - 16 sites across country
 - Hyola50 included at all sites

2

Progression of Group AD resistance breakdown at Eyre Peninsula, SA



3



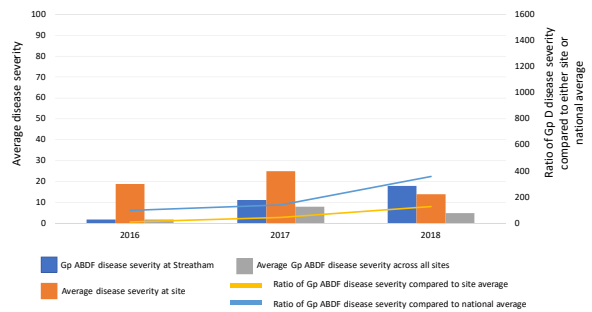
4

Current situation for Group ABDF resistance

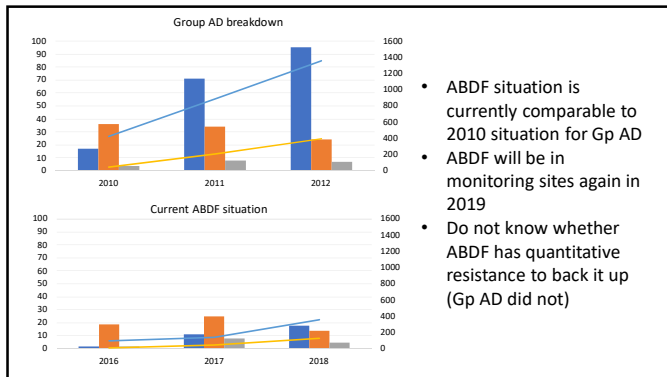
- Group ABDF) used in monitoring sites since 2016
 - Other Group ABDF cultivars were released in 2016
- Now have 36 monitoring sites each year across the country

5

Current situation of ABDF resistance in Western District, Vic

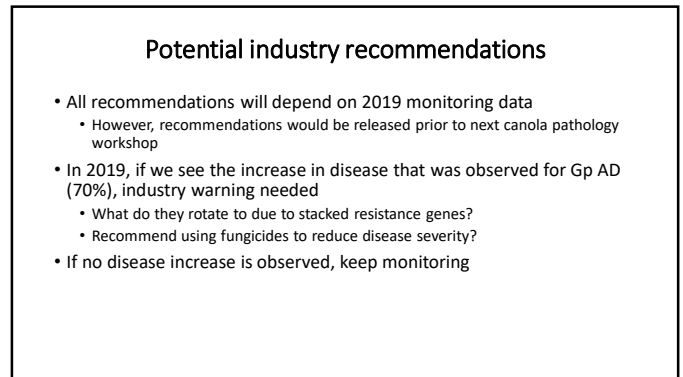


6



- ABDF situation is currently comparable to 2010 situation for Gp AD
- ABDF will be in monitoring sites again in 2019
- Do not know whether ABDF has quantitative resistance to back it up (Gp AD did not)

7



8