

# Victoria 2020 growing season: Blackleg monitoring sites & other diseases



**GRDC**  
GRAINS RESEARCH  
& DEVELOPMENT  
CORPORATION



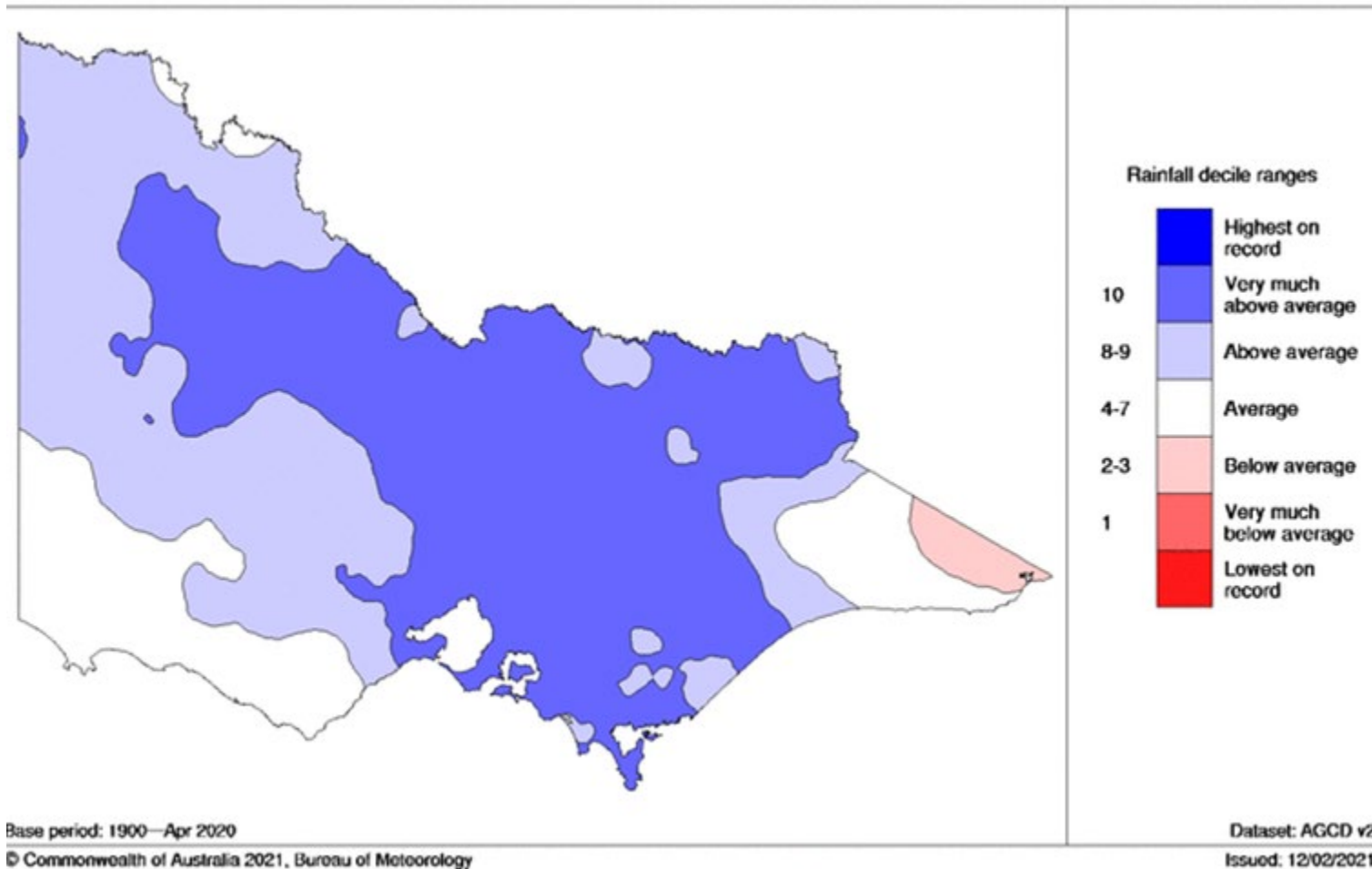
**marcroft**  
GRAINS PATHOLOGY



THE UNIVERSITY OF  
MELBOURNE

# Early rainfall was well above average

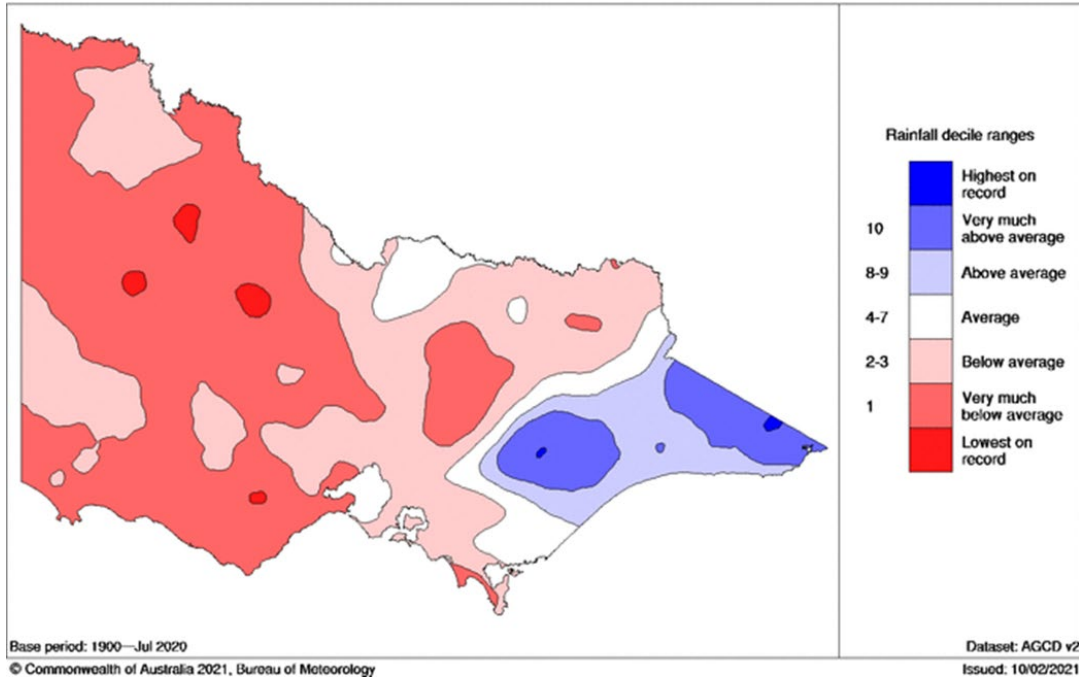
January – April 2020





# Drier than average winter

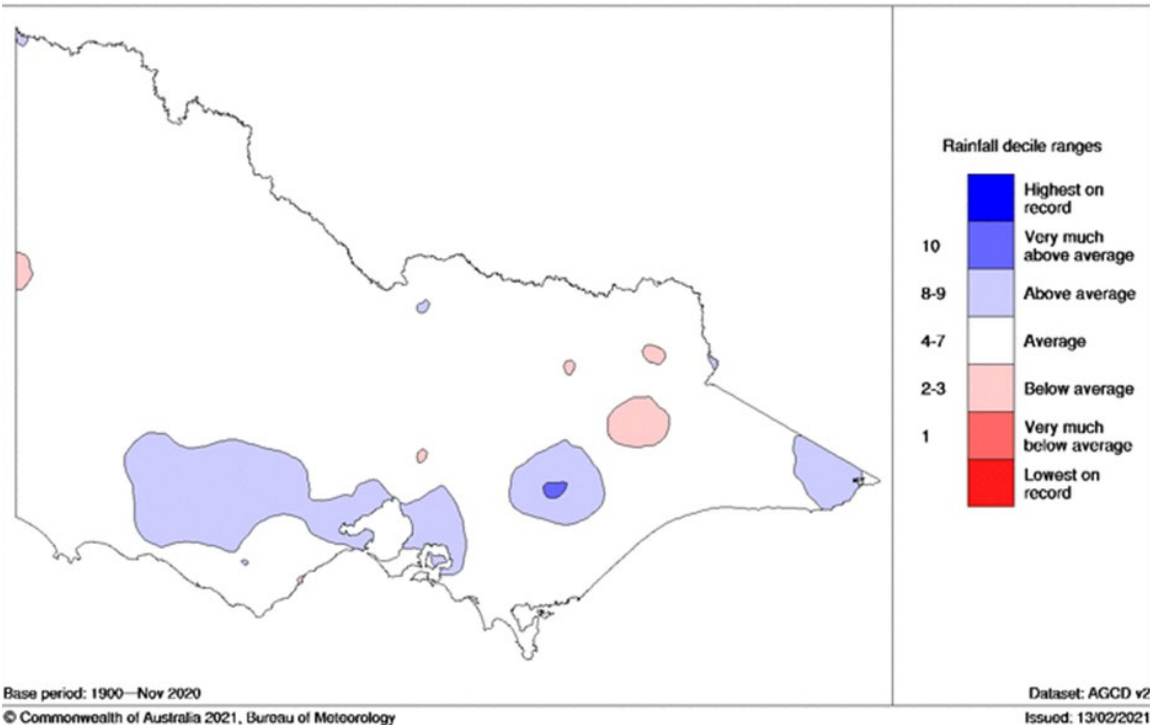
July 2020



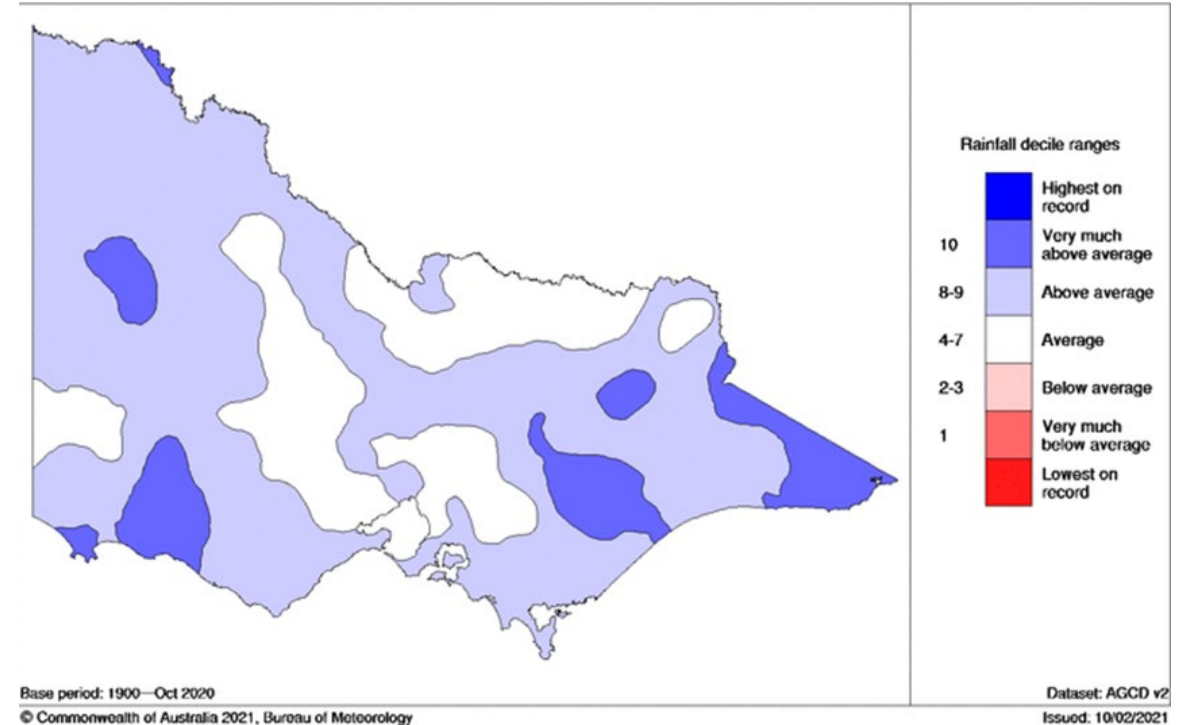
April sown plants infected post seedling

# Growing season rainfall was close to average

## April – November 2020



## October 2020





# Other diseases present and responded to fungicides



Photo S.Marcroft



# High levels of alternaria

Lake Bolac – untreated 2020



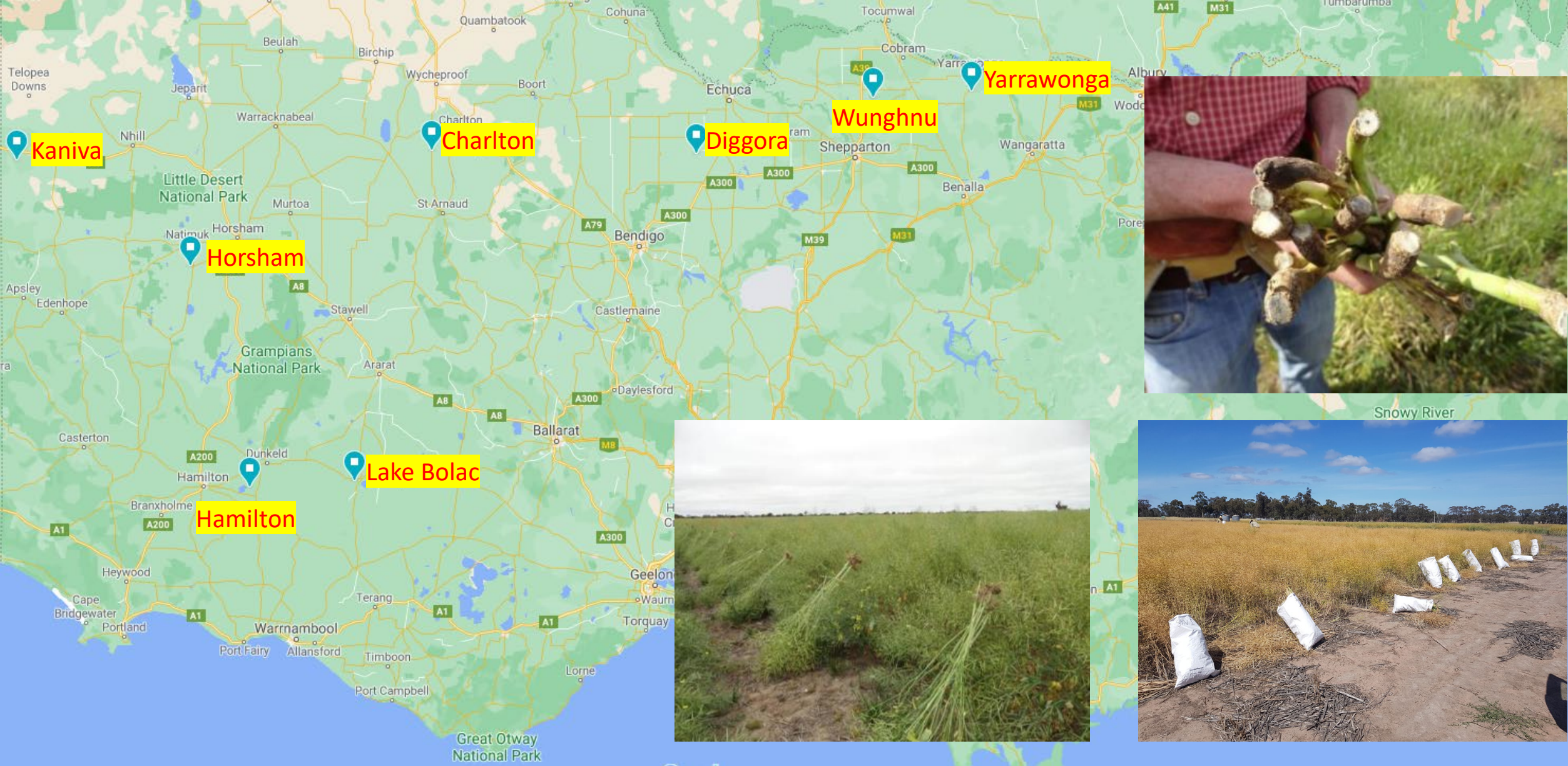
Lake Bolac – full control 2020



Additional 20% yield increase from alternaria control at Lake Bolac



# 8 monitoring sites across Victoria





# Blackleg present at all sites, but variable

Group A cultivar

Upper canopy  
infection severity      Crown canker  
severity (%)

## North Central

Charlton	6	7
Diggera	2	28

## North East

Wunghnu	9	7
Yarrowonga	9	11

## South West

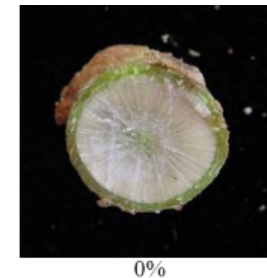
Hamilton	31	14
Lake Bolac	21	9

## Wimmera

Horsham	8	13
Kaniva	10	11



Upper canopy infection symptoms



0%



5%



40%



80%



100%

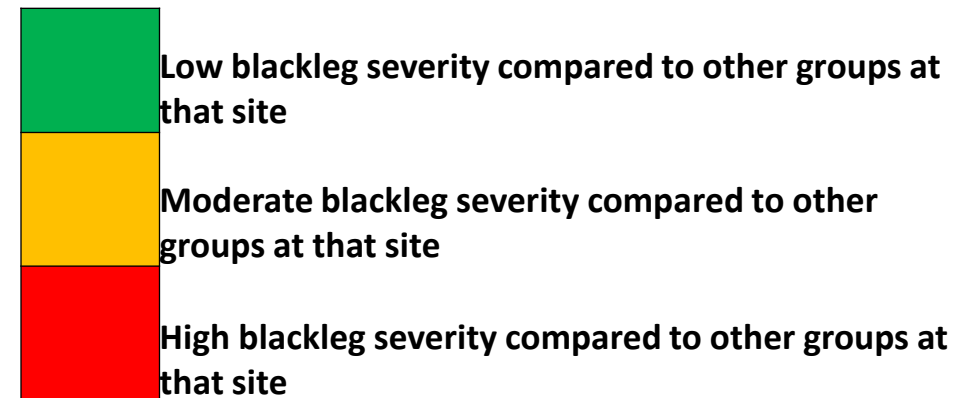
Crown canker



# 2020 site recommendations

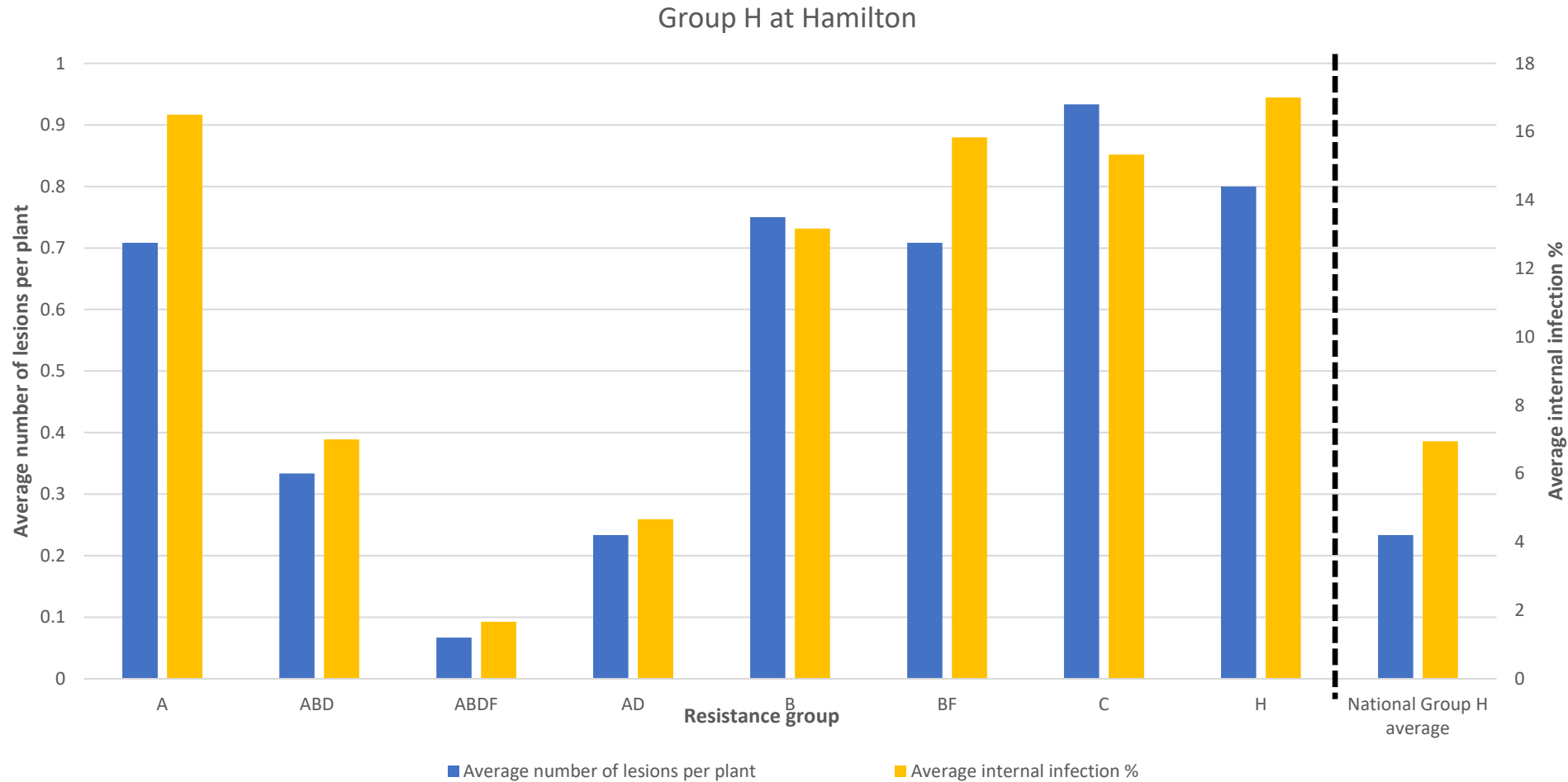
## Resistance group

Vic	A	B	C	BF	AD	ABDF	H
Charlton	Yellow	Yellow	Red	Green	Green	Green	White
Diggora	Red	Red	Yellow	Green	Green	Green	White
Hamilton	Yellow	Yellow	Red	Red	Green	Green	Red
Horsham	Red	Red	Red	Yellow	Yellow	Green	Green
Kaniva	Red	Red	Red	Red	Green	Green	Green
Lake Bolac	Red	Red	Red	Red	Yellow	Yellow	Green
Wunghnu	Red	Red	Red	Red	Green	Green	White
Yarrawonga	Red	Red	Red	Red	Green	Green	White





# Group H at Hamilton 2020 – 3x higher disease than national average







Thanks to Steve Marcroft, Angela Van de Wouw, Biz Sheedy, Al Smith & Buffy Harrison