



Department of  
Primary Industries



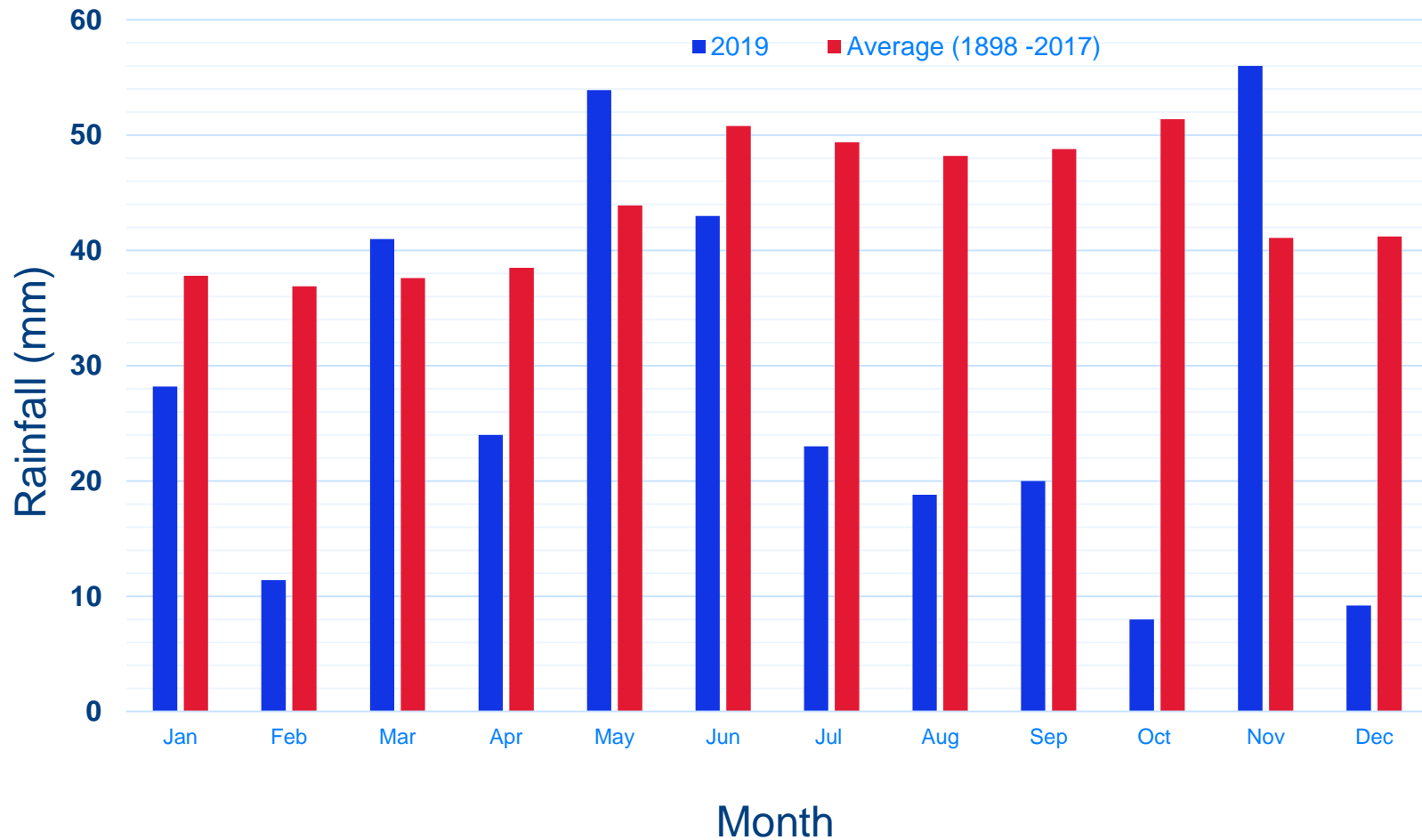
# New South Wales Update 2019

Kurt Lindbeck – NSW DPI Wagga Wagga

# Summary

- Most of NSW affected by drought, rainfall totals significantly reduced compared to long term averages
- Some districts in southern NSW had reasonable winter rains, followed by poor spring rainfall
  - Most crop cut for hay or baled (60% statewide)
  - Area sown approx. - 400,000ha (July) reduced to approx. 160,000 ha (Oct)
  - Most crop was south of Parkes
  - Yields mainly <1t/ha

# Rainfall 2019 – Wagga Wagga Agricultural Institute



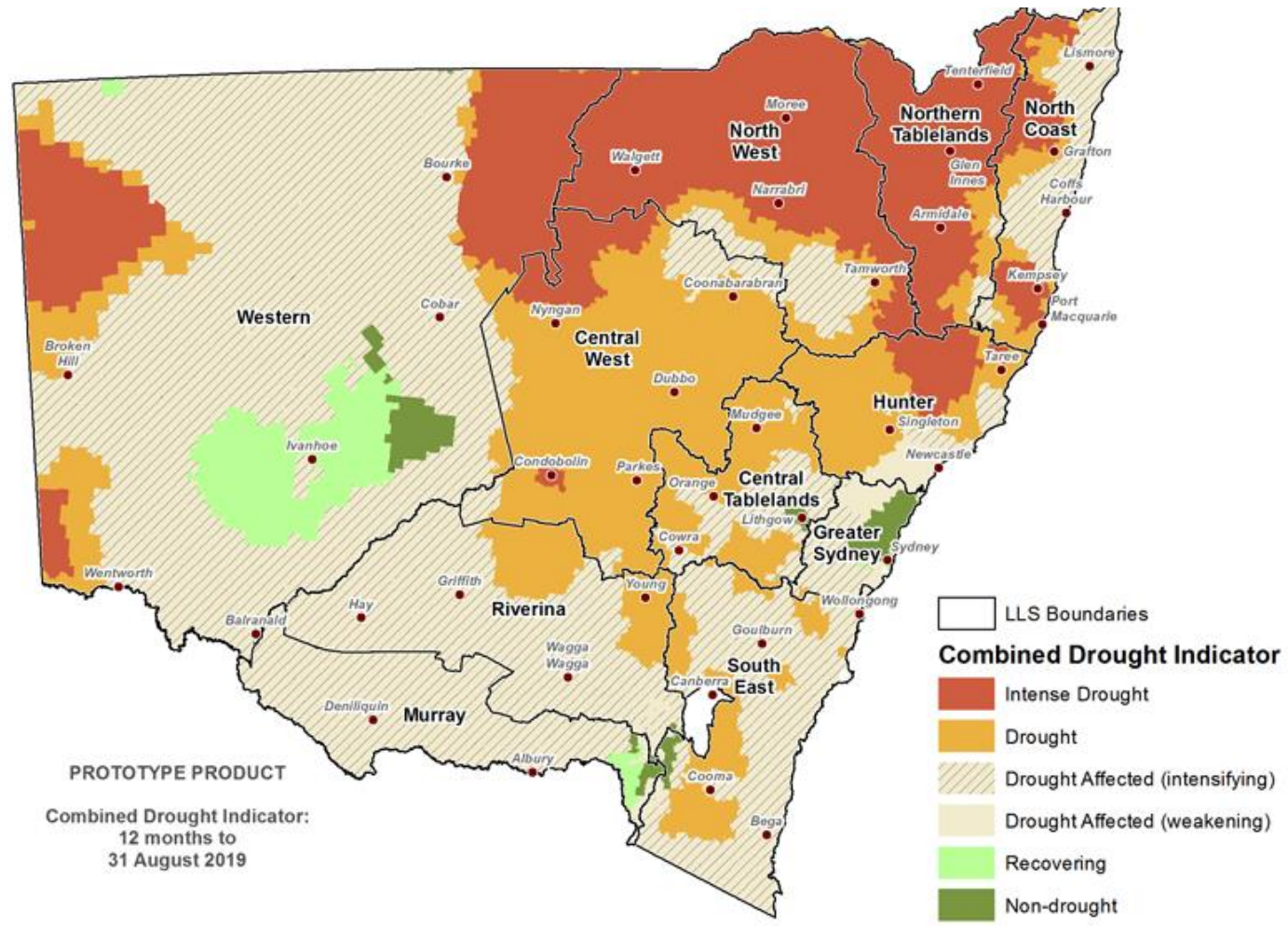


Figure 1. Verified NSW Combined Drought Indicator to 31 August 2019

# Disease issues

- Blackleg
  - Delayed appearance of disease
  - Low to mod levels at some sites in southern NSW in winter
  - Low to moderate levels of UCI in late spring

Site	Resistance Group							
	A	B	C	ABD	ABDF	BF	BC	H
NSW								
Beckom	Insufficient data due to drought							
Condobolin	Insufficient data due to drought							
Cootamundra	Red	Red	Red	Green	Green	Yellow	Yellow	Green
Cudal	Red	Red	Red	Green	Green	Red	Yellow	Green
Gerogery	Red	Red	Red	Green	Green	Red	Yellow	
Grenfell	Insufficient data due to drought							
Lockhart	Insufficient data due to drought							
Parkes	Insufficient data due to drought							
Wagga Wagga	Red	Red	Red	Green	Green	Red	Yellow	Green
Wellington	Insufficient data due to drought							

# Disease issues

- Sclerotinia
  - Very low levels of disease
  - Some crops still received foliar fungicide in southern NSW
- Return of BWYV
  - Number of crops north of Temora heavily infested by GPA
  - Testing found virtually 90+% infection with BWYV (symptomatic and non-symptomatic)
  - Most crops cut for hay or grazed by the end of August.



Temora – Aug 21<sup>st</sup> 2019

Henty – Aug 22<sup>nd</sup> 2019



