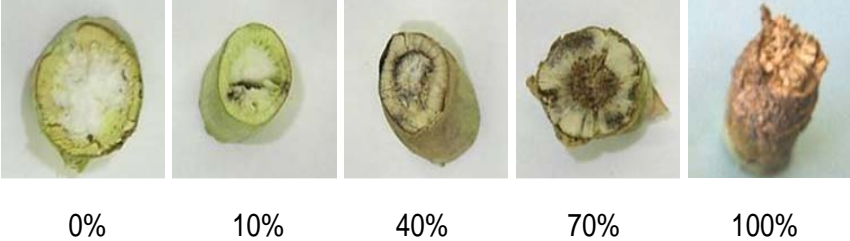


Effect of blackleg on canola

Trent Potter – SARDI

Steve Marcroft – Marcroft Grain Pathology

The level of blackleg varies from year to year but is generally higher in the higher rainfall, more intensive areas



Percent severe infection in canola trials 2004-2009

Site	2004	2005	2006	2007	2008	2009
Victoria						
Teesdale	NA	NA	58	62	2	58
Hamilton	18	28	33	13	0	30
Minyip	5	17	0	8	0	0
South Australia						
Mt Hope	10	0	32	27	2	22
Naracoorte	23	32	38	3	0	20
Spalding	5	13	12	10	0	7

ATR Beacon or Bravo TT

Minyip canola site 2009, minimal blackleg

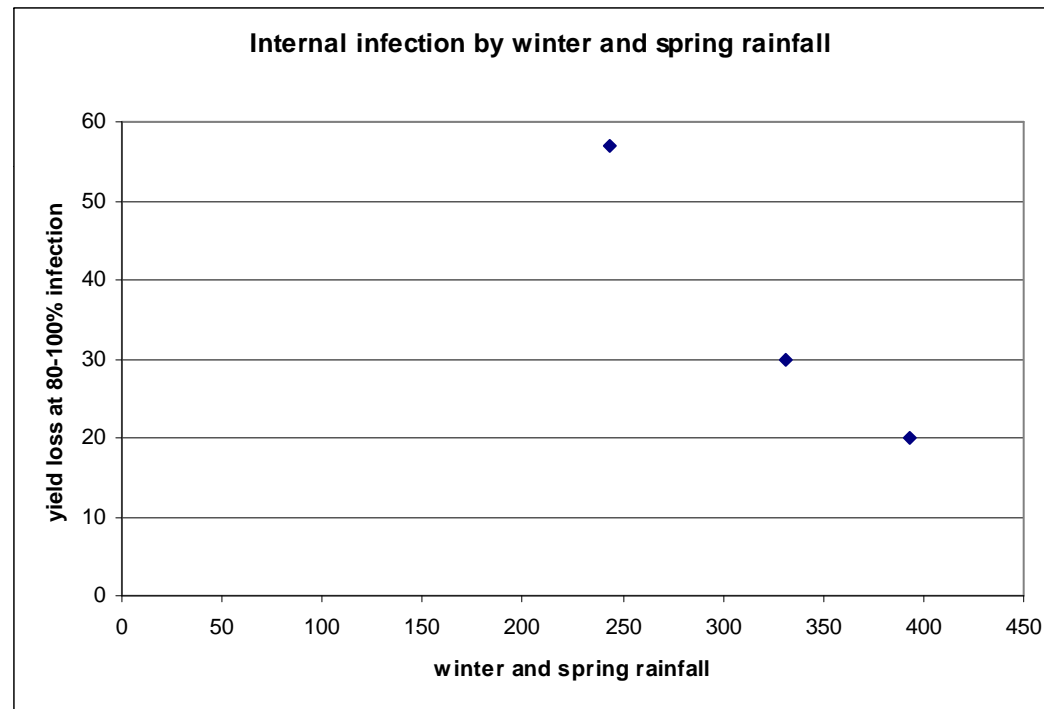


Significantly more blackleg



Relationship with season

In a good season, the effect of blackleg on plant yield is less than in a tough season



Is there interest in doing this trial at several sites in 2010?

Just need to cut plants off at windrowing stage

Separate plants into categories of internal infection (lots of 25 plants)

Dry and thresh

Measure 1000 grain weight and oil content

Breeders will be really running to keep up with blackleg

