



Outline

- ~ Fungicide timing
- ~ Row spacing/plant density/variety/Fungicide
- ~ Ground infections
- ~ Environmental factors and disease development
- ~ Key messages

GRDC UPDATES

Fungicide timing to manage SSR in canola

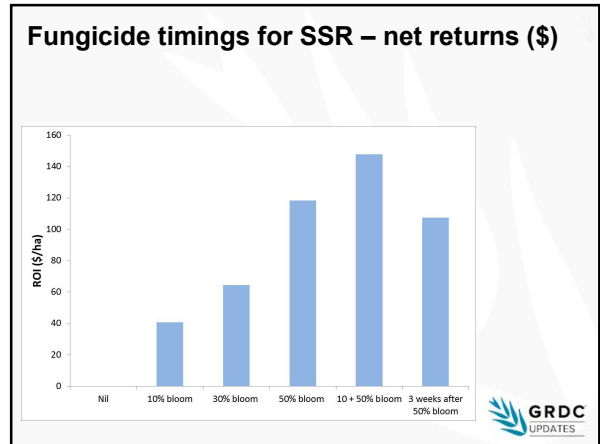
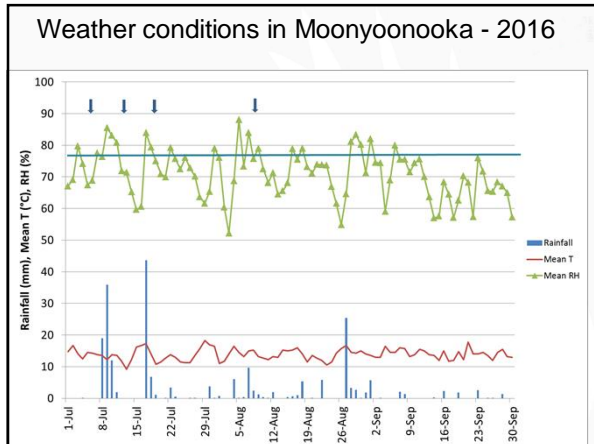
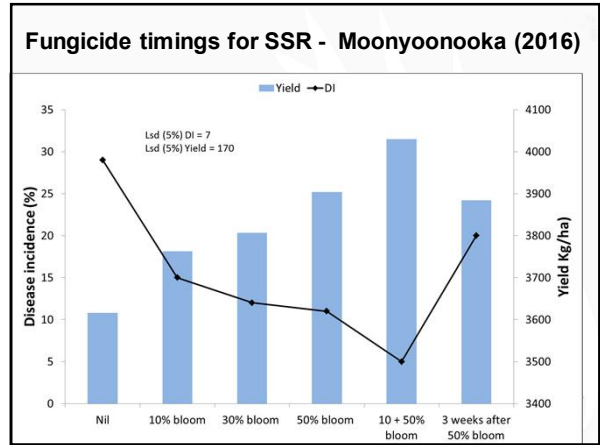
Location - Moonyoonooka

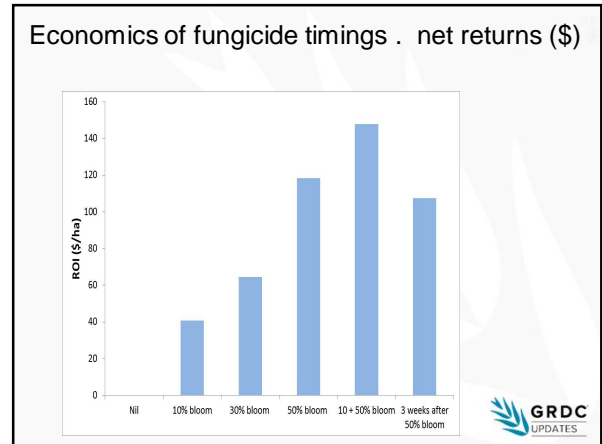
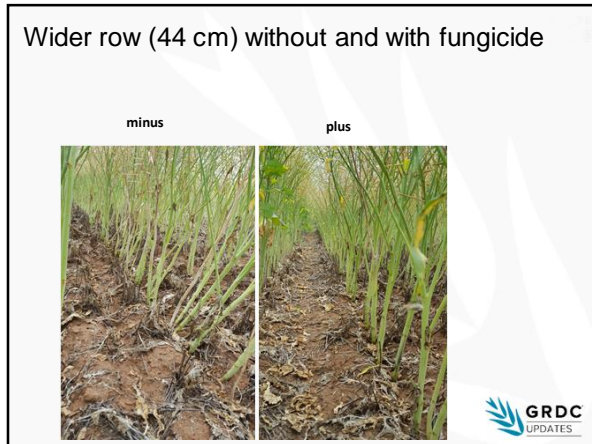
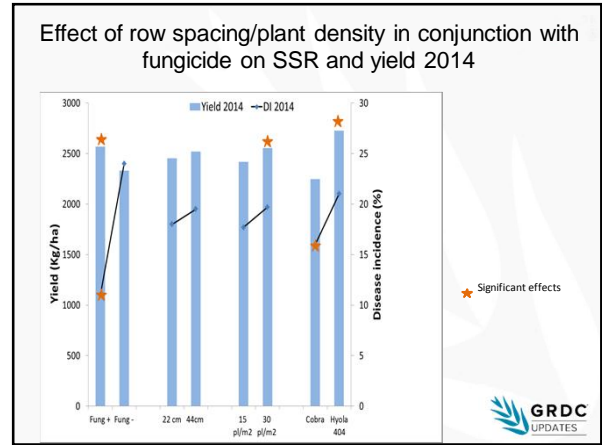
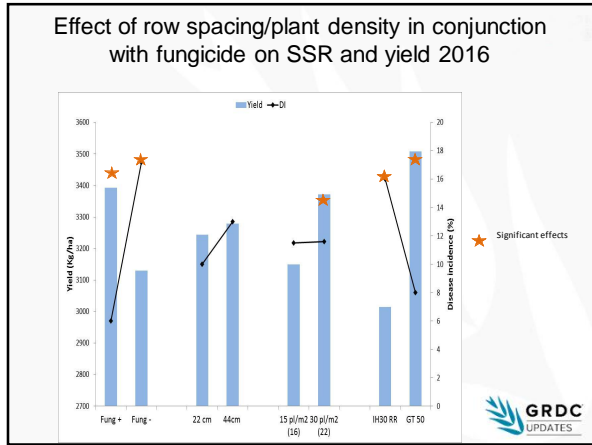
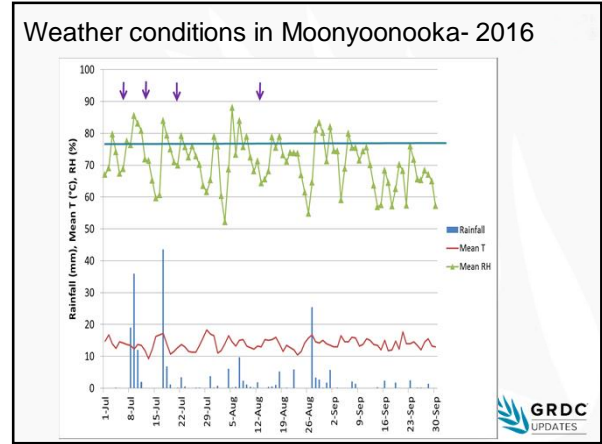
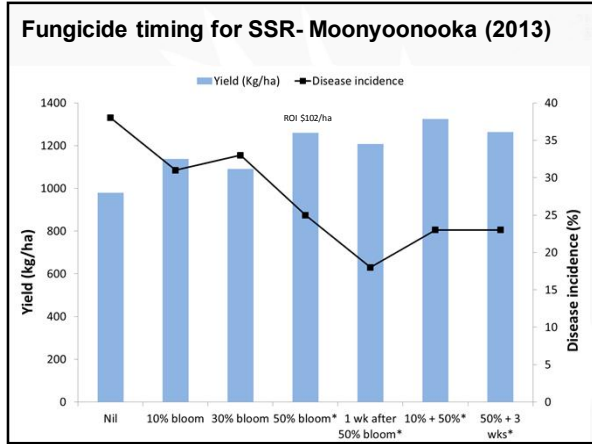
Variety
Hyola 404

Fungicides
Prosaro® @ 450ml/ha/
Sumisclex® @ 1L/ha
Product £q @ 800ml/ha

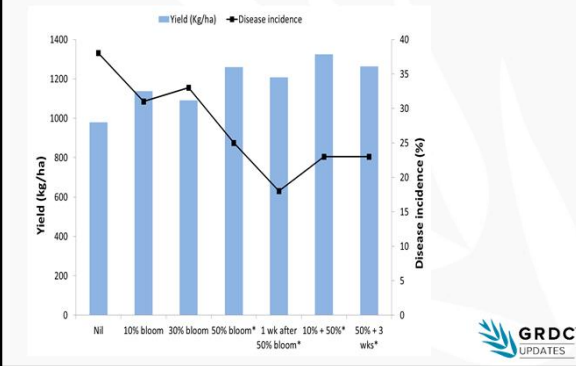
Timings
10, 30, 50, 10+50%, 3 weeks after 50%, nil

GRDC UPDATES

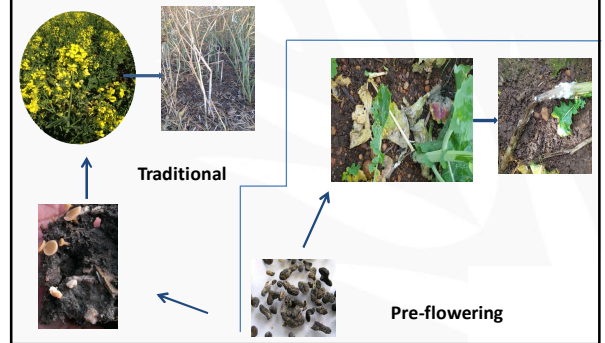




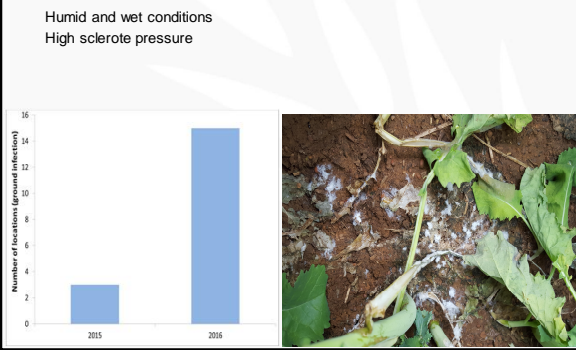
Fungicide timing for SSR . Moonyoonooka 2013



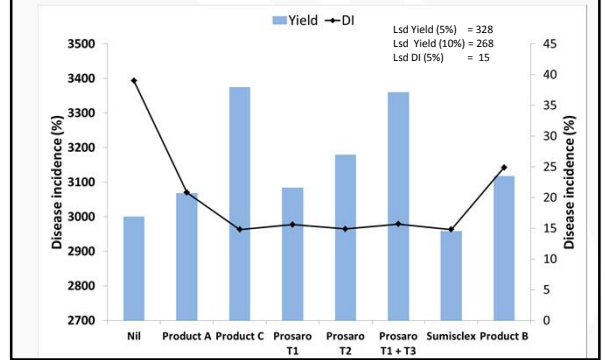
Sclerotinia ground (basal) infection



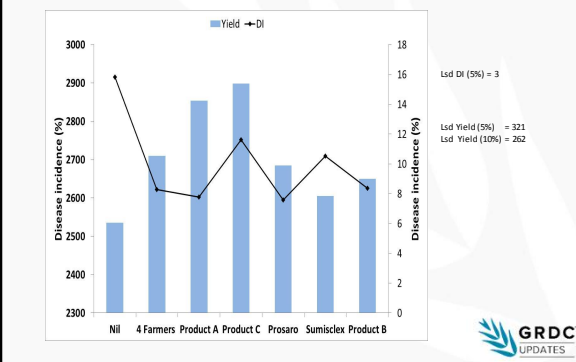
Prevalence of basal or ground infections



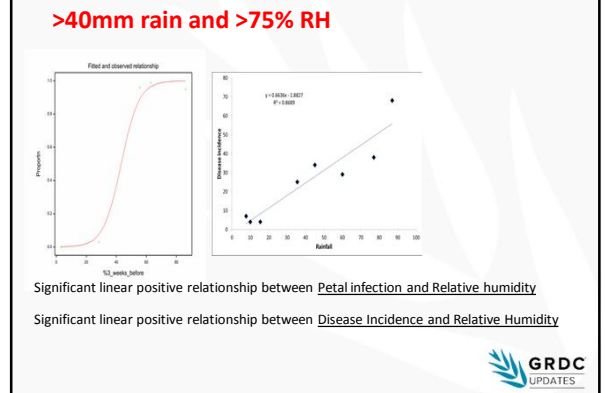
Fungicides effectiveness on SSR post ground infections - New Norcia



Ground infection-fungicides (Darkan)

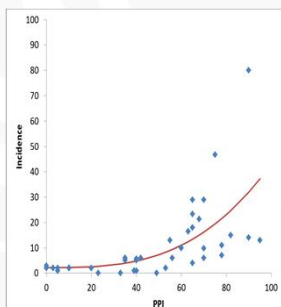


Environmental factors in relation to SSR development



Field scale petal testing for critical threshold values

- ~ 135 paddocks
- ~ Range 0-95%
- ~ Average 25%
- ~ SI (42 paddocks)



Plan ahead for Sclerotinia management in 2017

- Avoid planting into paddocks with history of Sclerotinia
- Rotate with non-host crops, avoid Sclerotinia affected Lupin paddocks
- Avoid sowing close to last year's affected paddocks
- Use seed free of sclerotes
- Budget for fungicide application



Acknowledgements

- ~ Grains Research and Development Corporation
- ~ M. Aberra, S. Vincent, A. Van Burgel, C. Beard, A. Smith, A. Hills, M. D'Antoniou, S. Peltzer, R. Loughman
- ~ Geraldton Support Unit - Steve Cosh, T. Bell
- ~ F Smart, A. Nixon
- ~ Katanning Support Unit . D. Cox, R. Quartermaine



Congratulations to the WA canola industry for achieving a great milestone!!!
Current estimated value \$1.18 Billion

