

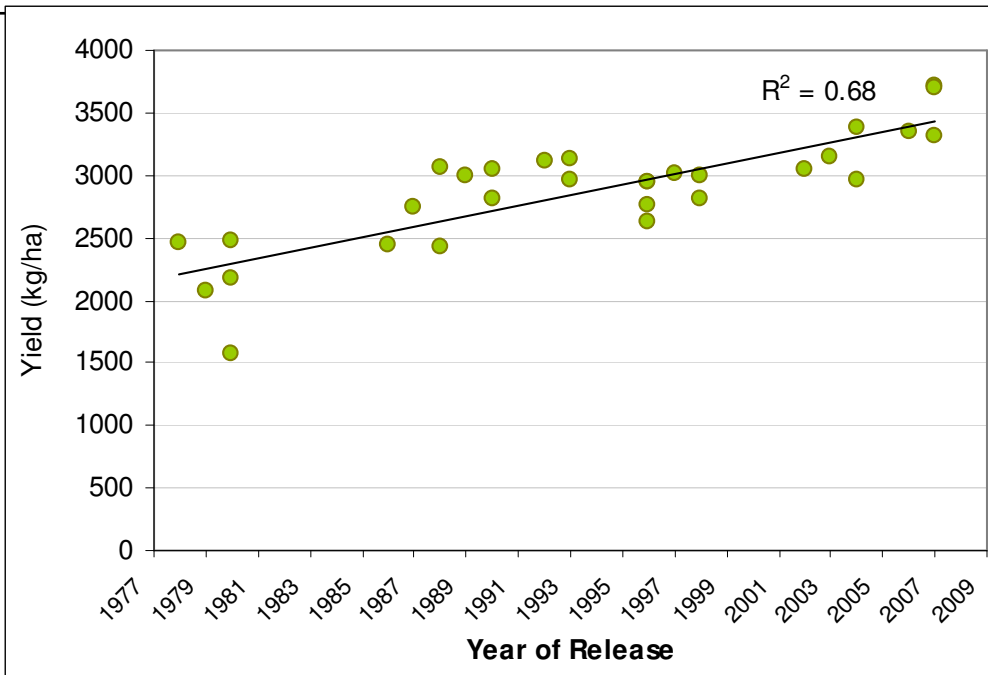


# Historical canola varieties and a grower survey for blackleg

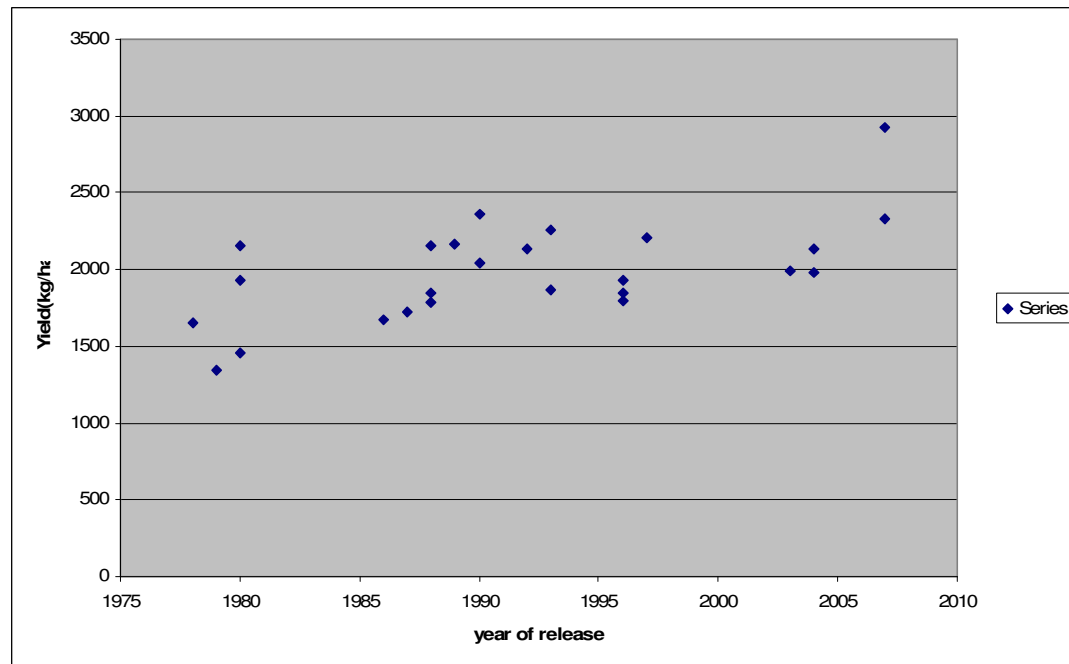
Trent Potter, SARDI,  
Wayne Burton, VicDPI,  
Jim Egan, SARDI,  
Steve Marcroft. MGP

better OILSEEDS





Cowra, NSW



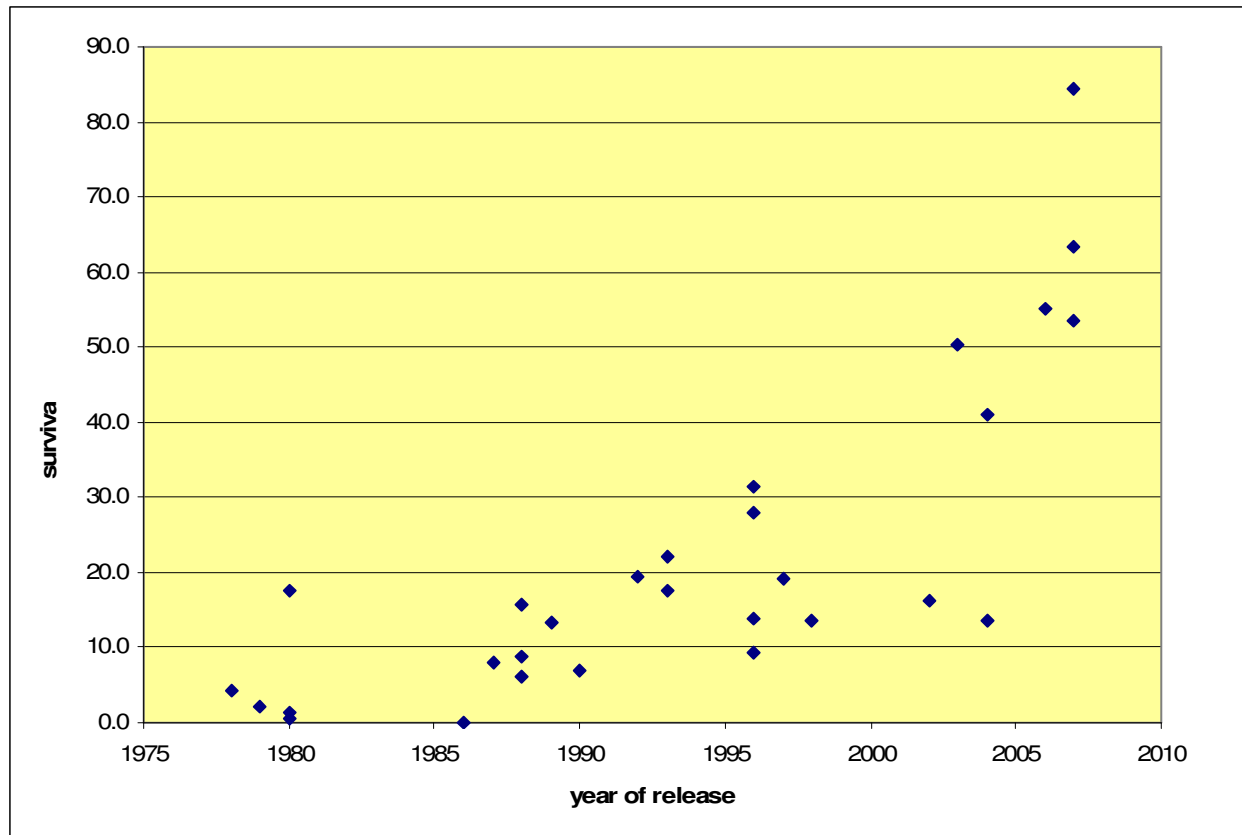
Bool lagoon,  
SA



Variety	year of release	Bordertown	Wonwondah	mean
Tatyoan	1986	0.0	0.0	0.0
Marnoo	1980	0.9	0.0	0.5
Wesroona	1980	0.8	1.8	1.3
Wesway	1979	4.0	0.0	2.0
Wesreo	1978	5.4	3.3	4.3
Shiralee	1988	9.9	2.3	6.1
Yickadee	1990	11.1	3.0	7.0
Wesbarker	1987	10.2	5.8	8.0
Nindo	1988	15.1	2.7	8.9
Monty	1996	15.4	3.5	9.5
Eureka	1989	20.6	5.9	13.2
Mystic	1998	21.4	6.0	13.7
Skipton	2004	15.0	12.5	13.7
Range	1996	21.7	6.1	13.9
Maluka	1988	23.7	7.8	15.7
Rivette	2002	28.2	4.5	16.3
Wesbell	1980	31.2	3.7	17.4
Rainbow	1993	26.6	8.4	17.5
Charlton	1997	28.7	9.9	19.3
Oscar	1992	29.7	9.1	19.4
Dunkeld	1993	29.3	15.0	22.1
Scoop	1996	35.1	20.9	28.0
Grouse	1996	46.1	17.0	31.5
Ag-Spectrum	2004	52.2	29.6	40.9
46C04	2003	59.4	41.0	50.2
Tarcoola	2007	58.6	48.7	53.6
AV-Opal	2006	50.4	60.0	55.2
AV-Garnet	2007	69.1	57.6	63.3
Hyola50	2007	74.8	93.8	84.3

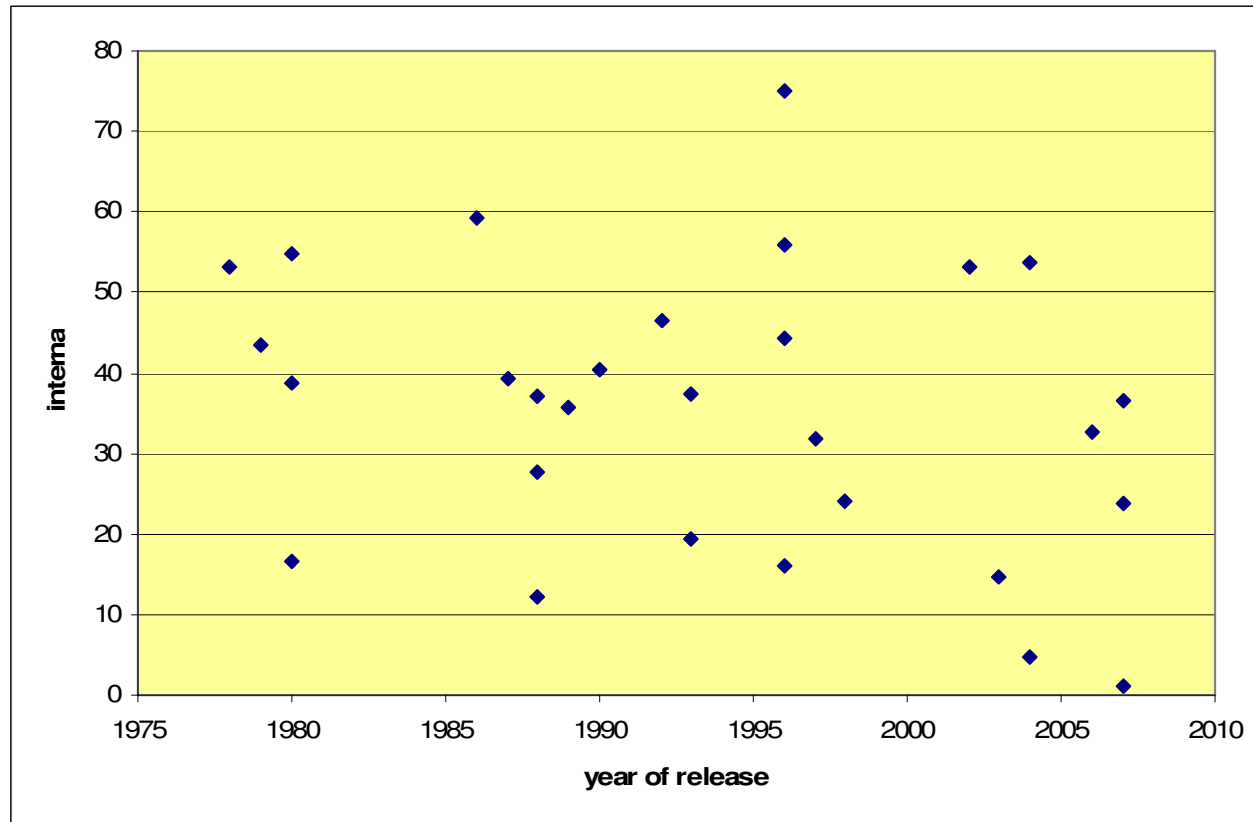


# Year of release and survival

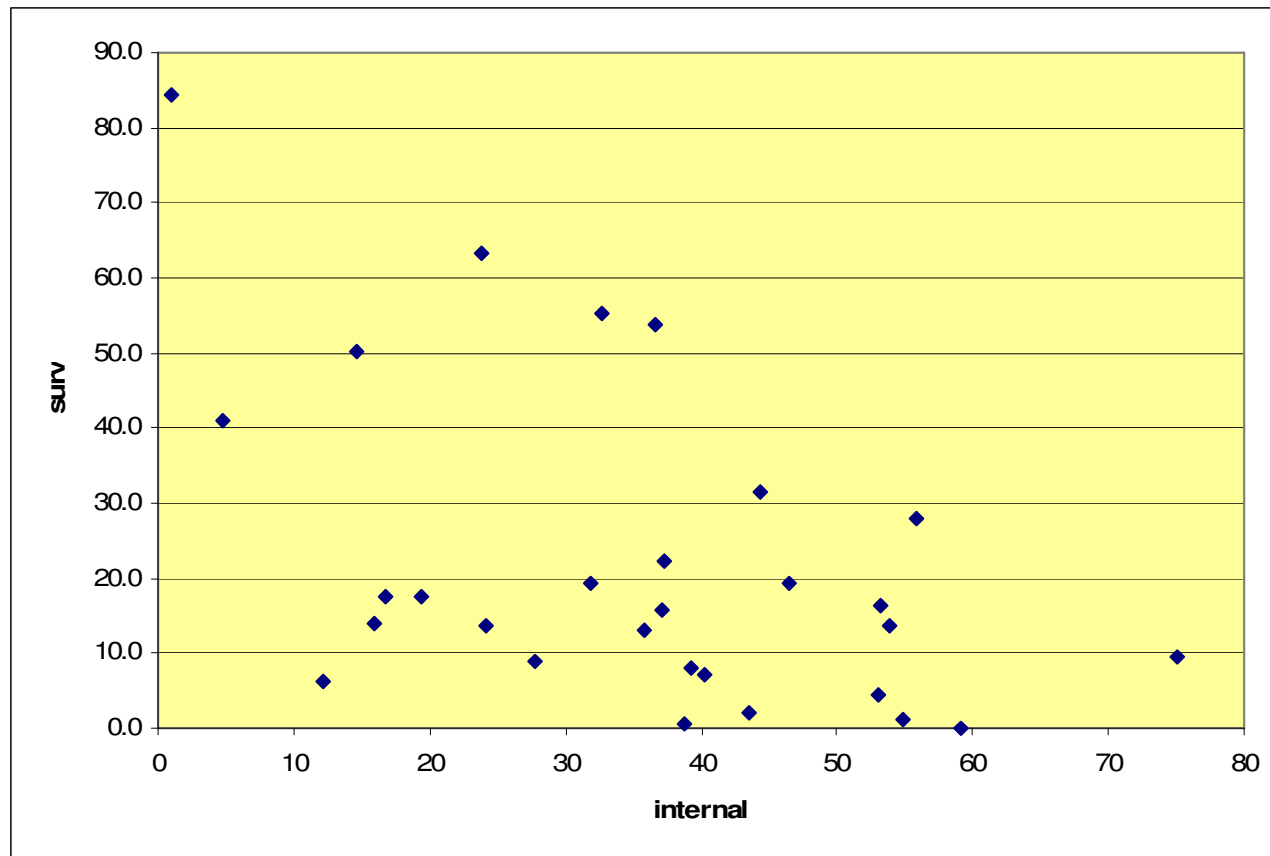




# Year of release and internal infection



# Survival and internal infection





## Disease survey 2008

106 crops surveyed in lower EP and SE

100 plants taken at random

Cut and scored for internal infection





# Lower EP

VARIETY	No. of paddocks	Range of blackleg	Average blackleg	Blackleg resistance rating
AV-Garnet	12	10% - 23%	14%	MR
AV-Jade	4	4% - 8%	7%	MR
Hurricane TT	8	5% - 15%	10%	MR (Provisional rating)
Hyola 50	12	1% - 13%	4%	R
Thunder TT	2	4% - 9%	6%	MR-MS (Reduced resistance)
Tomado TT	25	1% - 16%	8%	MR
45Y77	10	11% - 38%	24%	MR
46Y78	2	15% - 29%	22%	MR







# South East

VARIETY	No. of paddocks surveyed	Range of blackleg infection	Average blackleg infection	Blackleg resistance rating
45C75	4	24%-49%	42%	MS
46C76	6	24%-52%	42%	MS
ATR-Martin	5	10%-19%	15%	MR (Reduced resistance)
Hyola 50	3	0%-5%	2%	R
46Y78	3	5%-58%	32%	MR



## Yield loss by internal infection

<b>% Internal infection</b>	<b>% yield loss 2001 – good spring</b>	<b>% yield loss 2008 – poor spring</b>
0 - 10	0	0
20 - 40	7	14
50 - 70	12	30
80 - 100	30	57

Steve Marcroft

Trent Potter

10

